

PRESIDENT'S REPORT

We are nearing the end of another great year for the Manawatu Golf Club. This is the penultimate newsletter for the year, and the next one will focus on recognising the people who deliver such a great club and course. These people — both the paid and unpaid — really are the heartbeat of the MGC and I am looking forward to acknowledging some individuals, teams, and groups who give so much.

November also sees the conclusion of our Club Champs — all the very best to all those who have survived the knockout rounds to reach the finals. I am delighted and proud to be playing in the C Grade Championship Final but winning the semi — whilst at the same time accumulating 25 Stableford Points — may say more about my opponent's golf than mine! No names mentioned but I am sure some names may *Slide* into your mind. We have also had a variety of other tournaments and events hosted by the Club over the recent period and on behalf of the club, thanks to all involved in making the Manawatu Women's Open, the Spring Fling, and the Shootout such great successes — all the results of these events feature in this newsletter. The Shootout concluded with young Jack Clark triumphing on the 18th hole. Jack went deep in the event last year, so all the club were delighted to see him get the win on Sunday. Thanks too, to Warren Williams and John Bills for leading the event; hosting an event on RWC Final day presented its challenges, and all of these were overcome with common sense and great communication, to ensure all those who qualified could enjoy the chance to play. The decision to start the shoot out on the 3rd hole at least gave a guarantee to your President that he would not be eliminated on the 1st hole for the second consecutive year.

Please take the chance to read through this newsletter, which provides some really important information for members. A lot of people put a lot of

work into producing this monthly update and the info in here is gold. The newsletter is a mix of celebration and information. The club has had a big focus this year on ensuring the newsletter brings together everything happening at our busy club to keep members well informed and part of the decision-making process. Please pay extra attention this month to the info about:

- members playing with non-members who do not pay a green fee,
- the update about Cart Membership, and
- the opportunity for parents and grandparents to play in the new Generation Next golf competition.

It is great to see the return of Twilight Golf and I encourage anyone who has friends or family who would like to enjoy the MGC experience to invite them to use Twilight golf as the best form of introduction to the club. There is nothing better than 9 holes at Manawatu on a balmy Palmy evening followed by a delicious meal at Friday dining or a cheap Heineken at the bar (I've discovered a 350ml glass is only \$8) — if they don't want to join the club after that combo, they are crazy! Speaking of upcoming events, I am also looking forward to the Gilmours B Grade Open on Nov 12th, Closing Day on Nov 18th, and the best day of the year — Christmas Cheer — on Dec 2nd. These whole club events really are what make our club special. I just hope this year my prize is more linked to pork, rather than almond related.

There are now only 8 Saturdays (and 8 Tuesdays, 8 Wednesdays, 8 Fridays, and 8 Sundays) left until Christmas, so whatever day or days of the week you enjoy playing golf, make sure you play a lot of golf in the next 8 weeks.

From someone who plays a lot of golf, every time he plays ... all the best.

Brent Cawthray - President

Members Playing With Guests.

Being a member at the Manawatu Golf Club comes with great benefits, and great responsibility. We get to play an incredible course, can use great practice facilities, enjoy outstanding F&B, and we pride ourselves on having great staff. The responsibility component is also important. Over the last couple of months, we have had a number of instances where members are playing – often knowingly – with guests who have not paid a green fee. This is disappointing as, in reality, members are condoning their friends stealing from the club. A member wouldn't stand by and watch their guest take a sleeve of golf balls from the Golf Shop, or let their guests help themselves to a round of Heinekens at the bar – so why would members allow their guests to play for free? Green Fee income is essential to maintaining the course and club to the high standard we all expect. If you are playing with a guest, please ensure they are making the appropriate contribution to the club via Green Fees. In the future, if members are found to be knowingly playing with non-paying guests, in the first instance the Green Fee will be charged to the member's account, and if this is repeated behaviour, this will affect their future Membership of the MGC.

Thank you to our Course Marshals who continue to do a great job policing the course after hours. Thank you to our members who are doing everything they can to support and appreciate the great work the marshals are doing.

GENERAL MANAGER'S REPORT

It is great to be in November and entering the best part of the year for both playing golf and enjoying the club facilities.

It has been encouraging to see the event bookings for Christmas functions return to pre-Covid levels, and as mentioned in the last club newsletter, course use is at an all-time high. We are so fortunate our Greens team have a culture of working with our members to ensure access to the course is as uninterrupted as possible.

We are also grateful too, that by far the majority of our members extend a warm welcome to guests who come to the club and the course. In our previous newsletter, we highlighted that guests and events combine to make up 65% of our F&B turnover, therefore, members making our guests feel welcome benefits us all. Examples of the members welcome to guests that we appreciate include: a friendly smile as they enter the café, being patient with cars and walkers as they navigate the gauntlet of golfers



GENERAL MANAGER'S REPORT

playing the 9th hole (this can be very confusing for non-golfers), or the flexibility on club days when our spaces are compromised to accommodate big functions. On behalf of the MGC team, thanks for your thoughtfulness, patience, understanding, and good humour. I can assure you, our MGC team always do their best to ensure members and guests both have a wonderful experience at the MGC.

Weather conditions in October sometimes meant the course closed briefly, the combination of hard ground and heavy rain lead to surface flooding. The area behind the 12th hole is the low point (geographically) of the course, and this is very wet after a few downpours in late October – there are other wet spots on the course, so please look after these when playing – especially when driving carts. I know for a fact that Kiel and the team prioritise opening the course to both golfers and carts as much and as soon as possible. If there are ever any questions about course status, or reasons for closures, please give the MGC Office or Golf Shop a call for clarification. We would prefer you rang the office/golf shop instead of contacting the Greens team, as I know we would rather they were working their magic mowing greens, dispersing water, managing irrigation/drainage, and preparing the course, rather than taking calls and responding to emails.

In terms of course status, we are continuing to upgrade our messaging and how we communicate updates. The goal is to have the course status updated on the website (www.manawatugolfclub.com) asap, with updates and times for status to be reviewed displayed. We also have planned a text update service, so whenever the course status changes, you receive a text – this is a service that you opt into and is planned for roll out in early 2024.

Over the next few months, the course hosts a number of corporate and club events. November sees Sponsors Day on November 9th, Gilmours B Grade Open on November 12th, Club Closing Day on November 18th, and Christmas Cheer on December 2nd.

It is neat to see the staff in their new Club Shirts (worn on Wednesdays and Saturdays), with their



names on their sleeve. This is in response to survey feedback from members asking if staff could wear name badges. We have had a number of other initiatives (some small and some big) rolled out this year that are a direct response to MGC Survey feedback — these include:

- Launching the 2024 Junior Performance Academy.
- Making access to our great Junior Golf Programme one of our strategic priorities in 2024.
- Having the Golf Channel on the TV in the Café whenever possible.
- Designing Generation Next – a golf opportunity for Parents (or Grandparents) and Kids to play together in a fun and inclusive golf event at MGC. Please see the details later in the newsletter about this.
- Increasing the sand in some bunkers to ensure consistent depth.
- Improving the quality of the hitting nets (drainage, mat, safety, light etc.) to ensure members can still practice with Driver.
- Introduced new ranges of clothing (male and female) in the Golf Shop.
- Upgraded the Bayley's practice chipping area.
- Having Course Marshals on Sat AM/PM field to ensure improved speed of play.
- Prioritised the Business Plan preparation for Virtual Golf as a response to overwhelming support from membership to launch this product.
- Reviewed the heights of rough in winter.

GENERAL MANAGER'S REPORT

- Refreshed the light shades in the Café and painted the internal hallway.
- Changed the way we organise cutlery and introduced cutlery 'caddys' to tables. No more impossible to open napkins!
- Rostered an additional staff member to be a runner to increase speed of barista service at peak times (Wednesday am and Saturdays).
- Reviewed signage to streamline consistent information around the course.
- Introduced external Dot Golf Screen outside the Golf Shop.



Please see the information included in this newsletter that is applicable to cart users. From 2024, if members wish to use their own cart on course, they need to register for Cart Membership (no charge). In other cart related news, the first meeting has taken place of the Cart Path subcommittee, working to establish the 5YP for Cart Paths. If you have feedback or would like input on this plan, please email me. The first signs of this path infrastructure upgrade include the work of the path to the 10th tee – which is being prepped for hard surfacing pre-Christmas.

Other major course work planned over the Christmas period include the removal of all the old man pines and macrocarpas that are near the fire pit (between the 3rd tee and 17th green). Protection will remain for the 3rd tee by way of the Mexican pines, smaller natives, and the large macrocarpa by the Men's Blue Tee; however, the view to the 17th from the 3rd tee will look quite different in early 2024. Similar work is planned in the next 18 months for the old man pines (or should we call them 'old **they** pines') between the 1st hole and the approach to the 2nd green. We are at the planning stage of

forming a planting plan to replace these trees when they are removed, to protect the integrity of the 1st/2nd hole.

Whilst not wanting to be the Christmas Grinch, I can confirm that bar prices will rise on December 1st. This is our first price increase at the bar this year and we have absorbed a number of increases from Lion and DB throughout the year to ensure we remain in line with prices offered at similar clubs and bars in the region. It is important to remember that members receive a 10% discount on all bar prices by way of loyalty added to their account.

As a summary, here is the history of price increases on our 5 most popular beers over the last 4 years. It shows that on average, for beer drinkers, the cost has gone up by 4–4.5% pa. If any member would like to know more or if you have comments or complaints about pricing, please contact me (James) rather than raise these with our great bar staff.

Bar Top Sales Average Price	Sep-20	Sep-21	Sep-22	Sep-23	Total Increase over 4 years	Average Increase pa
Heineken	8.65	8.65	9.01	10.21	18.0%	4.5%
Panhead	9.60	9.60	10.02	11.30	17.7%	4.4%
Corona	8.10	8.10	8.49	9.65	19.1%	4.8%
Becks 440ml	8.90	8.90	9.28	10.48	17.8%	4.5%
Tui 475ml	7.20	7.20	7.50	8.52	18.4%	4.6%

GENERAL MANAGER'S REPORT

FYI here is some other fascinating data from the Hokowhitu Café that may interest you. This shows the most popular items (by quantity) sold at the Hokowhitu Café over the last 4 years. If you have enjoyed a coffee, a slice, a scone, or a club sandwich over the last 4 years, thank you for contributing to the club's success!

Manawatu Golf Club Inc				
Café Top Sales QTY	Sep-20	Sep-21	Sep-22	Sep-23
Flat White	10436	11630	12447	12745
Cappuccino	3283	3842	3919	4226
Latte	2704	3649	3999	4078
Scone/Large Muffin	6367	8867	9600	9191
Mini Savoury/Quiche	3954	3840	4473	5086
Club Sandwich	3105	3572	4306	4302
Slice	4121	4567	4177	3986
Fish	1830	2140	2725	2460
Cabinet Item	5619	6203	6061	6586

Moving back to our core business — which is **golf** — we recently hosted a group from Wellington who regularly

travel to play at courses all around New Zealand. It was great to see their feedback pop up on Facebook about their MGC experience (see right). This is feedback that is repeated consistently by groups and guests that play our course. Despite quite a challenging spring weather-wise, the course really is in outstanding condition and a pleasure to play on.

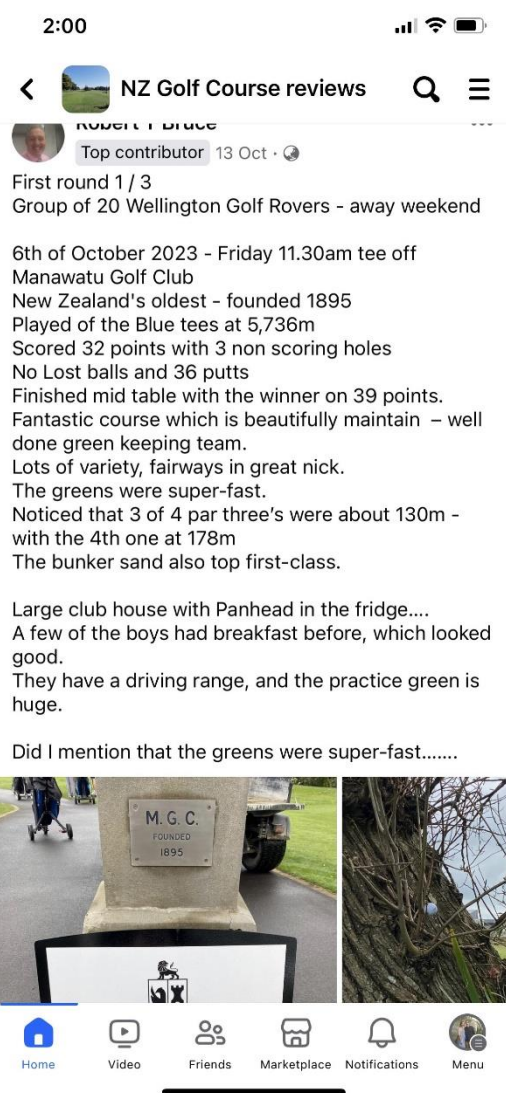
November 9th is the club's opportunity to appreciate our sponsors and host them for the competitive but fun Sponsors Day. This year, sponsors will contribute over \$100k to the course and club. Our sponsors are featured on the back page of this newsletter and our partnership with each of the local companies is vital to the overall success/future of our club. We have 1150 members who, I hope, will take the opportunity to reciprocate the support these sponsors give to our club – if you have the chance to choose, please choose the businesses that support the MGC.

In a weekly update in October, we shared plans for two projects that will be seen on course: 1) the Property Brokers signage on the Cart Shed, and 2) the proposal to host a second cell tower in our carpark. The Property Broker signage on the Cart Shed will be installed pre-Xmas and celebrates their great support for this project. The Cell Tower consultation period is open until November 4th. At present, here is a summary of the responses received so far:

- 90% support for the new tower and the potential new income stream for the club,
- 5% with questions about the project like “Could the construction of the tower include painting it green?”.
- 5% against the proposal due to the effect it could have on our “aesthetically-pleasing park-like golf course”.

There is a lot of great stuff going on at the club and on the course. Thank you for your support in making great things happen. Thank you taking the time to appreciate and acknowledge our great MGC team.

Ngā Mihi - James



MESSAGE FROM THE CLUB CAPTAIN

Well, here we are in November already and the year is rapidly coming to the end of our season. October brought not so much rain but the usual spring winds, proving that summer is on the way. These winds have dried the course out nicely, and thanks to the green keepers' great efforts, the course and greens are looking fantastic. It was remarked that "we are very lucky to have a course like ours." I replied, "It's not luck."

Twilight Golf is now underway and it's great to see the course, facilities, and the clubhouse busy again.

The club championship finals day is upon us and there are many historic trophies up for grabs. Good luck to all finalists.

Also, make sure you register in the card room for the Manawatu B Grade Championship, which is on 12th November, and Closing Day, which is on 18th November.

Before teeing off for your rounds, please make sure you all read the notice board on the wall on the clubhouse.

Tim Harris Presentation

The Saturday afternoon players proudly congratulated Tim Harris, who has unselfishly worked tirelessly as a chef in the café kitchen for 11 years. He has decided to have a change of direction and will take up a position in the plant nursery field. Well done Tim and good luck for your future. A top man!

Craigs Investment Partners Tankard 7th October

Well done to Brent Dickins, who won the Craigs Investment Partners Tankard for October.

45 points was a fantastic tally, followed by Don Scott with 43 points and closely followed by committee man Wayne Masters with 42 points.



Above Left: Tim Harris

Above Right: Brent Dickins, winner of the October Craigs Investment Partners Tankard.

MESSAGE FROM THE CLUB CAPTAIN

Club Closing Day 18th November

The sheet is now up in the cardroom for this men's and women's day for the Galloway Cup. This is a historic mixed foursomes event so pop your name in to enjoy this fun day. If you wish to play on the day but not as mixed pairs, you can still enter as usual by listing your name in playing fours.

Xmas Cheer Days

These very popular events are coming up from November — make sure you register online to get into the field so as not to miss out. Hams, Hams, Hams. Great prizes and heaps of fun.

- 21st Mid-Week Christmas Cheer
- 25th November, 9 Hole Closing Day Xmas Cheer
- 29th November, Wednesday Men Xmas Cheer
- 2nd December, Club AM/PM Xmas Cheer - compulsory to be able to play on that day

Golf Etiquette

Can all members please have some golfing etiquette and think of player's following them on the course. Self-policing and a friendly reminder in each four would make life better for other members.

It must be remembered that good manners and etiquette are an important part of playing golf to make the golfing experience pleasurable for all members on the course.

The Match Committee is expected to encourage the following of appropriate golfing etiquette:

- Start from the correct tee at the appropriate time.
- Keep up with the group in front, not just ahead of the group behind. If you are unable to do this, stand back for a few minutes and allow the group following to come through.
- Repair pitch marks on greens.
- Replace divots firmly on fairways.
- Rake bunkers and replace the rake outside of the bunker.
- Abide by the Club's dress code standards.

Some Rules Of Golf

Here are a few rules from the R&A



4.3 Use of Equipment

Rule 4.3 applies to all types of equipment that a player might use during a round, except that the requirement to play with conforming clubs and balls is covered by Rules 4.1 and 4.2, not by this Rule.

This Rule only concerns how equipment is used. It does not limit the equipment that a player may have with them during a round.

4.3a Allowed and Prohibited Uses of Equipment

A player may use equipment to help their play during a round, **except** that a player must not create a potential advantage by:

- Using equipment (other than a club or a ball) that artificially eliminates or reduces the need for a skill or judgment that is essential to the challenge of the game, or
- Using equipment (including a club or a ball) in an abnormal way in making a stroke. "Abnormal way" means a way that is fundamentally different than its intended use and is not normally recognised as part of playing the game.

This Rule does not affect the application of any other Rule that limits actions a player is allowed to take with a club, ball, or other equipment (such as setting down a club or other object to help the player in aiming, see Rule 10.2b(3)).

Common examples of uses of equipment that are allowed and not allowed during a player's round under this Rule are:

(1) Distance and Directional Information.

- **Allowed.** Getting information on distance or direction (such as from a distance-measuring device or compass).
- **Not Allowed.**
 - » Measuring elevation changes,

MESSAGE FROM THE CLUB CAPTAIN

» Interpreting distance or directional information (such as using a device to get a recommended line of play or club selection based on the location of the player's ball), or

» Using an alignment device (see definition in Equipment Rules) to help align the ball.

See Committee Procedures, Section 8; Model Local Rule G-5 (the Committee may adopt a Local Rule prohibiting the use of distance-measuring devices).

(2) Information on Wind and Other Weather Conditions.

• Allowed:

» Getting any type of weather information (including wind speed) that is available from weather forecasts, or

» Measuring temperature and humidity at the course.

• Not Allowed:

» Measuring wind speed at the course, or

» Using an artificial object to get other wind-related information (such as using powder, a handkerchief, or a ribbon to assess wind direction).

(3) Information Gathered Before or During Round.

• Allowed:

» Using information that was gathered before the round (such as playing information from previous rounds, swing tips or club recommendations), or

» Recording (for use after the round) playing or physiological information from the round (such as club distance, playing statistics or heart rate).

• Not Allowed:

» Processing or interpreting playing information from the round (such as club recommendations based on current round distances), or

» Using any physiological information recorded during the round.

(4) Audio and Video.

• Allowed:

» Listening to audio or watching video on matters unrelated to the competition being played (such as a news report or background music). But in doing so, consideration should be shown to others (see Rule 1.2).

• Not Allowed:

» Listening to music or other audio to eliminate distractions or to help with swing tempo, or

» Watching video of the competition that helps the player in choosing a club, making a stroke, or deciding how to play during the round, except that a player may watch video that is being broadcast to spectators at the course, such as on a video scoreboard.

See Committee Procedures, Section 8; Model Local Rule G-8 (the Committee may adopt a Local Rule prohibiting or restricting the use of audio and video devices during a round).

(5) Gloves and Gripping Agents.

• Allowed:

» Using a plain glove that meets the requirements in the Equipment Rules,

» Using resin, powders and other moisturising or drying agents, or

» Wrapping a towel or handkerchief around the grip.

• Not Allowed:

» Using a glove that does not meet the requirements in the Equipment Rules, or

» Using other equipment that gives an unfair advantage with hand position or grip pressure.

(6) Stretching Devices and Training or Swing Aids.

• Allowed:

» Using any equipment for general stretching (other than in making a practice swing), whether the

MESSAGE FROM THE CLUB CAPTAIN

equipment is designed for stretching, for use in golf (such as an alignment rod placed across the shoulders), or for any purpose unrelated to golf (such as rubber tubing or a section of pipe).

• Not Allowed:

» Using any type of golf training or swing aid (such as an alignment rod or a weighted headcover or “donut”) or a non-conforming club in any way that creates a potential advantage by helping the player in preparing for or making a stroke (such as help with swing plane, grip, alignment, ball position or posture).

Further guidance on the use of equipment described above and other types of equipment (such as clothing and shoes) is found in the Equipment Rules.

A player who is uncertain whether they may use a piece of equipment in a particular way should ask the Committee for a ruling (see Rule 20.2b).

See Committee Procedures, Section 8; Model Local Rule G-6 (the Committee may adopt a Local Rule prohibiting the use of motorised transportation during a round).

4.3b Equipment Used for Medical Reasons

(1) Medical Exception. A player is not in breach of Rule 4.3 if they use equipment to help with a medical condition, so long as:

- The player has a medical reason to use the equipment, and
- The Committee decides that its use does not give the player any unfair advantage over other players.

See Rule 25.3a (status of prosthetic devices); Rule 25.4f (application of Rule 4.3 for assistive mobility devices)



Returning Of Scorecards – A Friendly Reminder

As the Club Captain of the Manawatu Golf Club, one of my jobs is to monitor the entry of golf cards by club members after playing a round of golf. This is very important for the integrity of the scoring system as well as the fairness of golfers when playing competitions or matches.

There seems to have been some confusion in regard to match play cards, with some members believing they aren't required to enter cards for handicapping. This is incorrect. The handicapping system requires that scores from all forms of competition, including match play, must be entered for handicapping purposes.

A quick summary of the NZ Golf Club Rules are that “when playing with a partner and have played 12 holes or more, you Must enter a scorecard”.

Please note the full Match Committee Playing Rules are on the noticeboard in the Cardroom.

It is very important that you familiarise them for your future reference.

Up and Coming Events

Saturday 4th November: Club Champs Finals day & Craigs Investments Men's Tankard

Sunday 12th November: Manawatu B Grade Open

Saturday 18th November: MGC Closing Day event

Sunday 19th November: Man/Wang Champion of Champions day - Course Closed

Wednesday 29th November: Men's Wednesday Christmas Cheer - optional entry

Good golfing to all members

Alan Savell

Club Captain





EST. 1895

MANAWATU

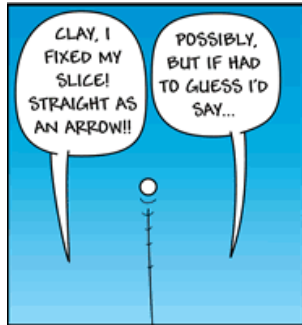
GOLF SHOP

MANAWATU GOLF CLUB

GOLF SHOP NEWS

Hi everyone.

It has been nice to see the sun lately — without the gale force winds. Not sure about you, but my golf ball doesn't seem to like playing in the wind.



Tip of the Month: Below are some tips to help deal with the strong wind.

Playing into the wind:

- **Take more club & swing softer:** Don't fall into the trap of taking the normal club for the yardage and trying to swing harder. Swinging harder creates more spin, which will mean the ball climbs high into the wind and loses distance. Depending on the strength of the wind, take more club. Sometimes this could be 3–4 clubs more.
- **Lower the ball flight:** taking an extra club and swinging softer will help with this, but what can also help is to visualise the flight you are trying to hit or imagine tree limbs are in front of you, and you must keep the ball lower than them.
- **How to hit the ball lower:** at address, keep the ball position around the middle of the stance. Have slightly more weight on the left side (for right-handed golfers). Swing shorter on the back swing and try to finish low and shorter on the follow through. Swing at 80% power. This will all help you keep the spin off the ball and keep the wind from affecting the flight of the ball as little as possible.

Playing downwind:

- Control your distance: Don't try hit it harder or softer, play your normal swing and take less club. Because the ball has less spin on it downwind, the ball will take longer to stop when it hits the green. So, allow for extra run out.

Playing cross winds:

- Play your normal shot shape: If the wind is helping your normal shot shape play with it. If the wind is going against your normal shot shape, take an extra club and let the wind straighten up the flight.

Junior golf update:

It's a busy time for us regarding junior golf. As well as our coaching programme and term play, we have got Junior Club Champs happening. We have 3 divisions — 3 holes, 9 holes, and 18 holes. The finals for these will be played on the club champs finals day with all the other final matches.

Also, at the end of November we have our Junior Prizegiving and our annual McDonalds Manawatu Junior Open. We run two of these events every year — the other being the McDonald's Manawatu Junior Masters. These events are hugely popular, not just in our district, but we have kids traveling from all round the lower North Island to play in these events. Check out the poster on the following page for details and to see the wonderful sponsors of this event.

Go the AB's (By the time you will read this hopefully we won).

Your Golf Shop Team

Alan, André, Tim, Brydie, Guy, & Penny

MCDONALD'S MANAWATU JUNIOR OPEN 2023

Nov 26th 2023

ENTRY FEE ONLY \$30
INCLUDES:
MCDONALDS LUNCH AND DRINK
TROPHIES IN EACH DIVISION
9 HOLE AND 18 HOLE STABLEFORD DIVISIONS
18 HOLE GROSS DIVISION
6 HOLE NON-HANDICAP DIVISION WITH MODIFIED TEES

Entries to:
<https://forms.office.com/r/bDAc4V7riA>
Entries close on Wednesday 22nd Nov 2023



Click [HERE](#) to enter the 2023 McDonald's Manawatu Junior Open.

Our finalists for the Junior Club Championships have been found! Ryan Block and Bradley Morgan will compete against each other in the 18-hole division. In the 9-hole division, last year's runner-up, Stellan Lawrence, will take on Alexander McGechan, and the 3-hole division sees Bryson Clement take on Tristan Hyatt. It is great to have these junior matches take place alongside all the other matches on the upcoming Club Championship's Final day. Good luck to you all.

Following their recent performances at the Junior Interprovincials, MGC members Mea Hohepa and William Dunsmore were selected to represent the MWGA senior teams in the Sybil Green Salver and the Shand Cup, held at Castlecliff Golf Club last weekend. It is great to see these promising juniors gaining experience by playing alongside the top golfers in our district.



Above: William Dunsmore and Mea Hohepa teeing off at Castlecliff Golf Club.

Right: William Dunsmore and Mea Hohepa on debut for the MWGA senior teams.

The Committee would like to confirm the acceptance to the Club of the following new and returning members who applied in September 2023.

- 7 Day:** Josh Harris, Ariel Pere, Darius Ruruku
- Under 30:** James Durston, Jivahn Hubbard
- Under 25:** James Hart, Nathan Sutherland
- Tertiary:** Tomairangi Hipango, Denny Yang
- 6 Day:** Quilai Wang
- 5 Day:** Whakataha Wihongi
- Restricted Jr:** Lachie Bishop, Matty Bishop, Harvey Myers, Jacob Orr, Ryan Rooney
- Social:** Kumar Shaiwai

During this same period, 7 members resigned, bringing our total membership number to 1152 members.

We wish our resigned members all the best and welcome our new members. We are sure you will enjoy your time at the club.





MAD BUTCHER

established 1971

Twilight

- **Fridays 3:00 - 5:30pm ... Starts 27th October**
- **Register in Pro-Shop and get allocated either the front or back nine holes**
- **Mad Butcher Voucher prizes for**
 - **Nearest-The-Pin in 1 shot on 4, 8, 11, 16**
 - **Nearest-The-Pin in 2 shots on 9 and 18**
- **Winners announced on Facebook**
- **Prizes to be collected from Pro-Shop from the following Saturday onwards**

MGC members \$0, Affiliated members of other clubs \$25, Non members \$35

COURSE NEWS

As we near the end of the year, let's hope for some finer weather.

Out on the course in the past month, we have been renovating in amongst the weather and the golfers. We have verticut the fairways, which helps remove thatch (organic matter) and helps water move through the surface. Tees were cored and dethatched, this also removed organic matter and helps the water get off the surface; we then seeded and topdressed. I have applied a granular fertiliser to give a better recovery. We have been working on keeping the bunkers to a standard — I believe these are a work in progress and always will be — we do have 56 bunkers around the course. The 11th bunkers have been a good trial, they are working how they should. The faces have caused a couple of issues as there has been too much sand that the ball plugs. New trees have been planted on the 7th, and they will look great in years to come. You all would have noticed the new tee markers on the course, this is due to the plastic ones breaking. The new tee markers look tidier, and I believe they are a nice fit for the course.



Above: A photo of the reason behind the change in tee markers — they keep breaking.



Over the next month, we will be coring the surrounds on the 20th of November, so please pick up and move to the next tee if we are working on a surround. All going well, the wind dies down and will allow us to get some spraying done. We are behind on weed spraying, fertilising, and insecticide applications. Fescue banks and fence lines are also still to be sprayed. We are a couple of staff down, which also makes it hard.

As greenkeepers, we try to allow people to play their golf as much as possible, but we can't control the weather. When we do close the course, this is to protect the turf as much as possible; if we don't do this, it does thin areas out. Throughout the years, the course drainage has improved. In winter, the Manawatu Golf Club is a wet course — years ago there were even alternative greens, so the course has made huge improvements. We have also addressed the need for carts; we are looking at ways to improve the course to allow their use.

Please continue to repair your pitch marks, replace your divots, and watch where you are walking/driving your carts. This is to help keep the course in a good shape.

The greenkeepers wish everyone well in their final matches of the club champs, playing in any competitions, or even just with their own golf games.

Have a good month of golf 😊.

Kiel Stechman - Course Superintendent

CELL TOWER UPDATE

The Manawatu Golf Club has been in discussions with a Telco provider about the installation of a Cell Tower at the far end of our car park. This would be the second cell tower on course as we have had a Spark Tower on the right side of the 10th hole for a number years.

We have just received a concept plan of the tower and the proposed location, so I thought this would be a great opportunity to share the information with the membership.

The benefits of hosting the tower on site at MGC include:

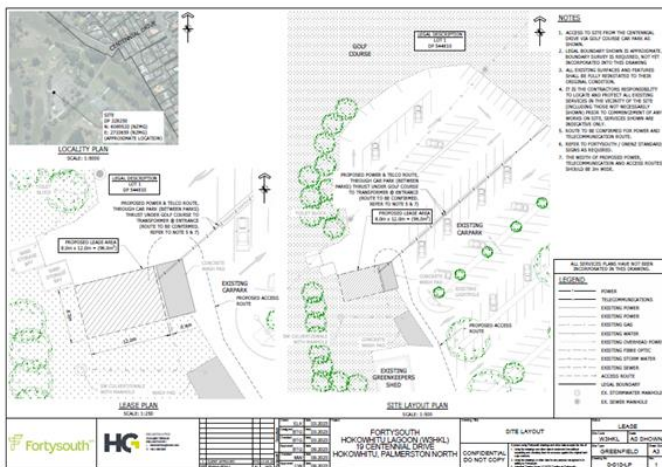
- A significant financial one-off payment prior to construction.
- Ongoing annual payments for the next 35 years (a 35-year lease, same as the Spark Tower).
- A real benefit of the project is that the construction on the tower would allow the MGC to piggy-back on the installation of vital infrastructure (in particular, a secondary power source from the road) at greatly reduced cost (and at times, little to no cost).
- This future proofs this part of the course and club, and allows for the Green Keeper's Shed and the carpark to have increased energy capacity, which could be used for future projects, such as charging electric mowers or the installation of car charging stations in the future.

The potential drawbacks are:

- The visuals of having a 2nd Tower located on course. The tower height would be approximately 20 metres.

The visual impact of the Tower is illustrated in the photos to the right, which show the before and after view of the tower.

If you have any feedback (positive or negative) on the possible construction of a cell tower in the carpark, please email gm@manawatugolfclub.com before November 4th.



PROPERTY BROKERS - CART SHED IMAGERY

The Manawatu Golf Club has grown our partnership with Property Brokers around the new Cart Shed. This is a highly-valued partnership by MGC. Prior to Christmas, signage reflecting the partnership between MGC and Property Brokers will be put up on the Cart Shed Wall (facing the 1st fairway). To give members an idea of what this may look like, an artist's impression of the imagery is displayed below. Planting of a new hedge will coincide with the installation of the Property Brokers Imagery and the hedge will grow to approximately 1200mm.

PB069901 - MANAWATU GOLF CLUB SHED SIGNAGE

Proposed layout - Larger ACM

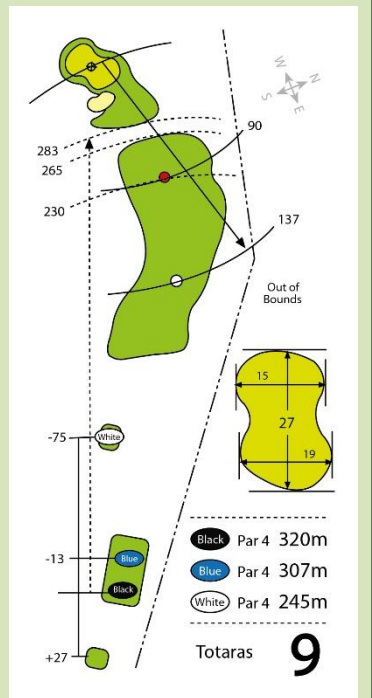


9th Hole Reminder: Message from our Club Captains

We have a unique design feature on our course with our main entrance running through the 9th hole, in front of the green. Many of our guests (and some of our members) are not always sure when it is safe to use the path/road to cross the 9th fairway.

Please can we remind all golfers that it is our **golfers' responsibilities** to give way to people coming through the gate. Please can we ask golfers to wait and give way to people who are entering and exiting the course. If you have started your shot that may be impossible, but a short delay isn't going to kill anyone.

Thank you
Deb (Women's Club Captain) and Sava (Club Captain)



CART MEMBERSHIP

From 2024 **Cart Membership** is offered — and required — for any member who wishes to use their own cart on course. Cart Membership is available for all MGC Members who are Cart Users. There is no charge for cart membership (and no plan to charge in the future), it is simply a way to register Member's Carts on course and to ensure that members are aware of, and follow, the Cart Rules. The Cart Membership Agreement and the Cart Rules are attached below. Once you complete the Cart Membership Agreement you will receive a copy of the rules to stick on your cart window, and a personal cart number to identify your cart.

Cart Membership will ensure responsible cart users have **increased** access to the Golf Course. From January 2024 there will be 3 possible options for Carts on Course status.

Open for all Carts

Closed for all Carts

Open to Cart Member's Carts Only

Under 'Cart Member's Only' status, the MGC Carts will also be able to be hired as the hireage agreement has been updated to match the Cart Membership rules.

The Cart Rules and the Cart Membership Agreement can be found [HERE](#). Please return the Cart Membership Agreement to the Golf Shop (Andre) or Membership Office.

MIXED NINE HOLE NEWS

We had a very successful Open Day. It was a beautiful day, great course conditions, and the visitors were most impressed. There was a lovely raffle table, thanks to our own members, Rangitikei Meats, Mad Butcher, and Bulls 4 Square.

The Men's Open Day trophy was won by Geoff McBrydie from Foxton and the Judy Robson Trophy was won by Diane Corbett from Feilding. A great day was had by all!!! Several players played at Kapiti's Open Day, taking away a lot of prizes — well done. Wednesday's weather has not been favourable — roll on summer!

The Club Champs are nearing the end, some great challenges and good luck to those playing in the finals.

Open Day Photos:

Far Right: Diane Corbett (Feilding) and Geoff McBrydie (Foxton).

Right: The impressive raffle table.



Our Shootout is being played on Sunday. Good luck to the top 10 players and may the best person win.

Good golfing.

Colleen Fraser
9 Hole Club Captain



CELEBRATING
25 YEARS
WORLD WIDE



IMMERSIVE THEATRE AT ITS
STARTLING BEST
BROADWAY BABY



SIDE-SPLITTING LAUGHTER
GUARANTEED
SCOTTISH FIELD



PERFECT FOR THE WHOLE
FAMILY TO ENJOY
SEE DO EAT

FAULTY TOWERS

Original

the Dining Experience

it Interactive
Theatre

Manawatu Golf Club

19 Centennial Dr, Palmerston North 4410

Saturday 14 September 2024

Doors open 6:30pm; show starts 7:00pm

\$140.00 pp, includes a 3-course meal and 2-hour interactive show

06 357 8793 ext 3 | www.manawatugolfclub.com

Click [HERE](#) to book your tickets now..

WOMEN'S GOLF – MESSAGE FROM THE WOMEN'S CLUB CAPTAIN

October has been a busy month with some fun golf on the way.

The Women's Spring Fling proved to be a very warm spring day — almost too hot! This is a fun way of getting 9-hole and 18-hole women golfers together. We had first, second and third placed pairs.



Spring Fling Photos:

Far Left: 1st place Tarnea Leslie & Elizabeth Lander.

Centre: 2nd place Lorraine Sixtus & Kerry Abel.

Left: 3rd place Glyn Robinson & Sue Rule.

Women's Open Day Photos:

Below Right: 1st place Kathy Henderson from Feilding.

Below Left: 2nd Place Jill Shirkey from Feilding.

Early in October, the Women's 18-hole Open Day had a great field of 93. Again, the weather came to the party and with our very supportive sponsors, many of the golfers played well enough to win a prize. The Alison Schultz Cup is also played for, with the winner being the best Gross score in the bronze division. The 2023 winner was Barb Pratt from Marton.

The top three overall stableford prizes are the icing on the cake and top of the pops was Kathy Henderson from Feilding who won the Manawatu Knitting Mills voucher of \$350. Second, also from Feilding was Jill Shirkey, winning the fantastic box of goodies from Footloose.



Our own Maxine Whittfield came third overall, winning \$100 from Hokowhitu 4 Square. These women all scored 39 Stableford

points, so the good old countback had to be used. Many more in the field took home prizes thanks to the support from Haru Japanese Restaurant, Kelly's Footwear, Village Wine Trader, Broadway New World, and Bunnings. As always, there were great donations from our women members as well.

Each year the proceeds from the Open Day go to various projects around our golf club, be it the artwork on the 10th tee or the plantings by the 1st tee, the bookcase in the women's locker room, or towards a new food warmer in the café. It's great to be able to contribute in some way.



WOMEN'S GOLF – MESSAGE FROM THE WOMEN'S CLUB CAPTAIN

The Thursday Club finale was played, as always, by way of the shootout over 12 holes. As it is a shootout, we always have a sheriff and deputy of some sort, and Jill Dixon and Glyn Robinson did a great job!

Last person standing wins the Reta Parkinson Cup. This year the winner was Janine Healey.

All the best to our Club Champ finalists playing on Saturday 4th November. Casey Chettleburgh and Lisa Herbert, Jill Clifton and Shengyi Ye, and Rhea Hazners and Sue Spiers.

Big congratulations to Lisa Herbert who has been named in the three-person New Zealand team for the Women's Amateur Asia Pacific Seniors. This is competed for in Vietnam at the Vinpearl Golf Nam Hoi An, November 21–23. The best two scores count each day for the team, alongside a competition for best individual. We wish Lisa well.

Lisa was also in the district's Sybil Green team playing at Castlecliff last weekend, winning all three of her matches. Alongside her in the quadrangular tournament from our club were Leander Tyacke, Casey Chettleburgh, and Mea Hohepa.

Now, let's turn our attention to November. We have the Midweek and Saturday women's closing days on 7th and 11th. This is where we have the joy of presenting the winners with their prizes for 2023.

Following this, we have the — always a great night out — Women's Annual Dinner. This is open to all our women members, and it gives us a chance to get together over a delicious meal and to celebrate our year of golf. More information to follow but note it in your calendar, Wednesday 15th November. Keep an eye out for your email invite which will be coming your way. You may have already received it!!

Club Closing Day is Saturday 18th November, the fun mixed Foursomes Day. Join in the fun and if you don't have a partner, I am sure we can find you one.

And it wouldn't be November without Christmas, so Christmas Cheers are on the 21st and 25th, with the Club Christmas Cheer on Saturday 2nd December.

This also means the Christmas box will be out for your food donations, which we give to the Salvation Army — every little bit helps.

Following all of that, we start summer golf. With that in mind, you may be finding that there is more run on the ball so remember to give those golfers ahead of you a bit of space and if you do have your best shot ever, yell Fore!!! It also wouldn't be golf without the odd bunker shot or pitch mark or divot. That is golf, and as a golfer, part of the game is raking, repairing, and replacing! We are a very skilful bunch.

Enjoy your November golf.

Deb Archer
Women's Club Captain



Above: Shootout winner Janine Healey alongside the sheriff and deputy, Glyn Robinson & Jill Dixon.

GENERATION NEXT



- **Family FUN Golf Tournament**
- 2 person teams of different generations within your extended family & playing from different tee blocks (One player under 20yrs and at least a 20yr age gap)
- At least 1 MGC member per team
- Qualifying round followed by 9-hole knock out format over Summer
- **Entries close Nov 26th**
- Qualifying to take place on 10th Dec
- Final to be played on April 28th
- \$20per team (Entry includes all green fees)

**WHO WILL BE CROWNED THE GENERATION NEXT
CHAMPIONS!?**

ENTER VIA THE MGC WEBSITE

(go to "member access" then to "event registration")

Click [HERE](#) to enter the Generation Next event.

TEAM SELECTIONS & NATIONAL TITLES

With the representative season in full swing, there have been many MGC members who have seen their hard work and steady performances rewarded with selection into NZ and MWGA teams. Congratulations to the following members for their recent successes.

NZ Senior Team Selection

Congratulations to MGC members Lisa Herbert and Tony Chettleburgh for their recent selections into the NZ Women's and Men's Senior Teams.

Lisa will compete at the Women's Amateur Asia Pacific Seniors Championship, while Tony will compete at the Asia-Pacific Seniors Championship. Both events are to be played in Vietnam at the end of November.

Good luck to you both at these prestigious events.



Above: Tony & Casey Chettleburgh win the 2023 NZ Mixed Foursomes.

Right: Regan McConaghty, Mitchell Proctor, Daniel Haretuku, Casey Chettleburgh, Mea Hohepa, Leander Tyacke, and Lisa Herbert at the Shand Cup and Sybil Green Salver event.

MWGA Selections

A number of MGC members were selected to play at Castlecliff Golf Club last weekend as part of the Shand Cup and Sybil Green Salver competitions. These quadrangular events are contested each year between Manawatu-Wanganui, Hawke's Bay, Taranaki, and Wellington.

Regan McConaghty captained the men's side, which consisted of fellow MGC members Mitchell Proctor and Daniel Haretuku. Also in the team were Ryan Rooney, Liam Finlayson, and William Dunsmore, who are all secondary members and are often found playing and practicing at the MGC.

The women's team included a number of MGC members as well, with Casey Chettleburgh, Lisa Herbert, Leander Tyacke, and Mea Hohepa selected.

The results didn't go the team's way, with the men's side finishing 4th in the Shand Cup and the women's team finishing 3rd in the Sybil Green Salver; however, there were a lot of positives taken from the weekend.

2023 NZ Mixed Foursomes Winners.

Congratulations to the father-daughter pairing of Tony and Casey Chettleburgh, who won the 2023 New Zealand Mixed Foursomes, which was held at Boulcott's Farm Heritage Golf Club earlier in October.

Tony and Casey won the final on the 19th hole against former MGC member Amy Linton (nee Smith) and her brother Robin Smith. Well done Tony and Casey!



WHAT'S ON IN NOVEMBER

Please note this programme is subject to change. Please remember to always check and book via the tee sheets on the Club website or at the card room kiosk for available tee times.

November

■ MEN
 ■ WOMEN
 ■ MIXED
 ■ EVENT

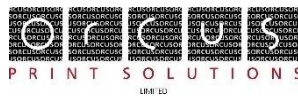
	MONDAY	TUESDAY	WEDNESDAY	THURSDAY	FRIDAY	SATURDAY	SUNDAY
	6	7 Mid-Week Closing Day	8 9 Hole: Committee's Choice	9	10 Twilight Golf 3pm-5.30pm start	11 Best Gross Shootout Saturday Women's Closing Day 9 Hole: Closing Day	12 Manawatu B Grade Open
	13	14 Fun Day	15 Women's Annual Dinner 9 Hole: Closing Day	16 Yorb Business House	17 Twilight Golf 3pm-5.30pm start	18 Club Closing Day	19 MWGA Champion of Champions
	20	21 Mid-Week Christmas Cheer	22 9 Hole: Summer Competition Christmas Cheer	23	24 9 Hole: Champion of Champions Twilight Golf 3pm-5.30pm start	25 9 Hole: Summer Competition Christmas Cheer	26
	27	28 Summer Golf	29 Christmas Cheer Optional entry 9 Hole: Summer Competition	30			



SPONSOR OF THE MONTH



PLEASE CONTINUE TO SUPPORT OUR SPONSORS AS THEY ARE SUPPORTING YOUR CLUB - Major Sponsors Below



**Brian Green
Property Group**
Property Investment,
Management & Development



PAUL O'BRIEN



MANAWATU KNITTING MILLS LTD

