



February 2020

MESSAGE FROM THE GENERAL MANAGER AND PRESIDENT

Welcome to 2020 at the Manawatu Golf Club and with one month already passed us in the new year, we have an exciting few months on the radar. The Annual General Meeting has been held and we welcome Dave Forrest, Wayne Masters and Alan Savell to the Committee. Richard Shaw retained as Club Captain along with Alva Joe, Vicki Worker, Grayson Joines, Rob Green and myself (Brent) will steer the Club during the next twelve months. Rodney Thomas departed the Committee after four years, thank you Rodney for all your efforts.

A special occasion as well with Hugh Glendinning being awarded Life Membership at the golf club. An outstanding contribution to the club, the Eagles Golfing Society and the local Manawatu Wanganui Golf Association. Congratulations Hugh.

Opening Day has been and gone and great to see so many people participating in these mixed events. The ANZ Grandmaster Putting Cup is back on this year and of course the big one is the Brian Green Property Group NZ Super 6's. I understand there will be 11 women from the Aus LPGA tour looking to play in the tournament. That will be exciting to see how they measure up against the men. Christine continues to work on the volunteer planning, a huge thank you to the many members that have donated their time to help. That is the Manawatu Golf Club members for you. Kiel and his team are working tirelessly to present the course in top order and I must say it's looking in excellent condition and will only get better as the tournament gets closer. Please give the green staff some space while they prepare the course and please make an effort in the weeks to come to ensure divots and pitchmarks are repaired correctly.

The 2020 programme booklets have arrived and are available from the office or down in the card room. From time to time there will be changes but all of these will be notified well in advance.

The river land sale became unconditional on the 20th December and now the gazetting process is underway with the Club's solicitors and the Council's solicitors handling this. Once the funds have been received we will notify the membership. Likewise the Committee is in the process of paying out \$50,000 in debenture shares. All successful recipients have been notified and the administration process is underway. It is planned there will be further debenture ballots following the receipt of funds from the river land sale.

A special welcome to all the new members who will be receiving the newsletter for the first time. We are experiencing positive strong comments from the new members and certainly appreciate the feedback. Our numbers have grown slightly which is a positive sign.

Brent Cawthray & Warren Collett



ANZ GRAND MASTER PUTTING COMPETITION

Sunday 23rd February - 4:00pm

Open to EVERYONE!

9 Hole Putting competition played off the stick with knock out after each match.

Plate competition for 1st round losers!

An entertaining evening with music, cash bar and fun golf. All you need to bring is your putter!

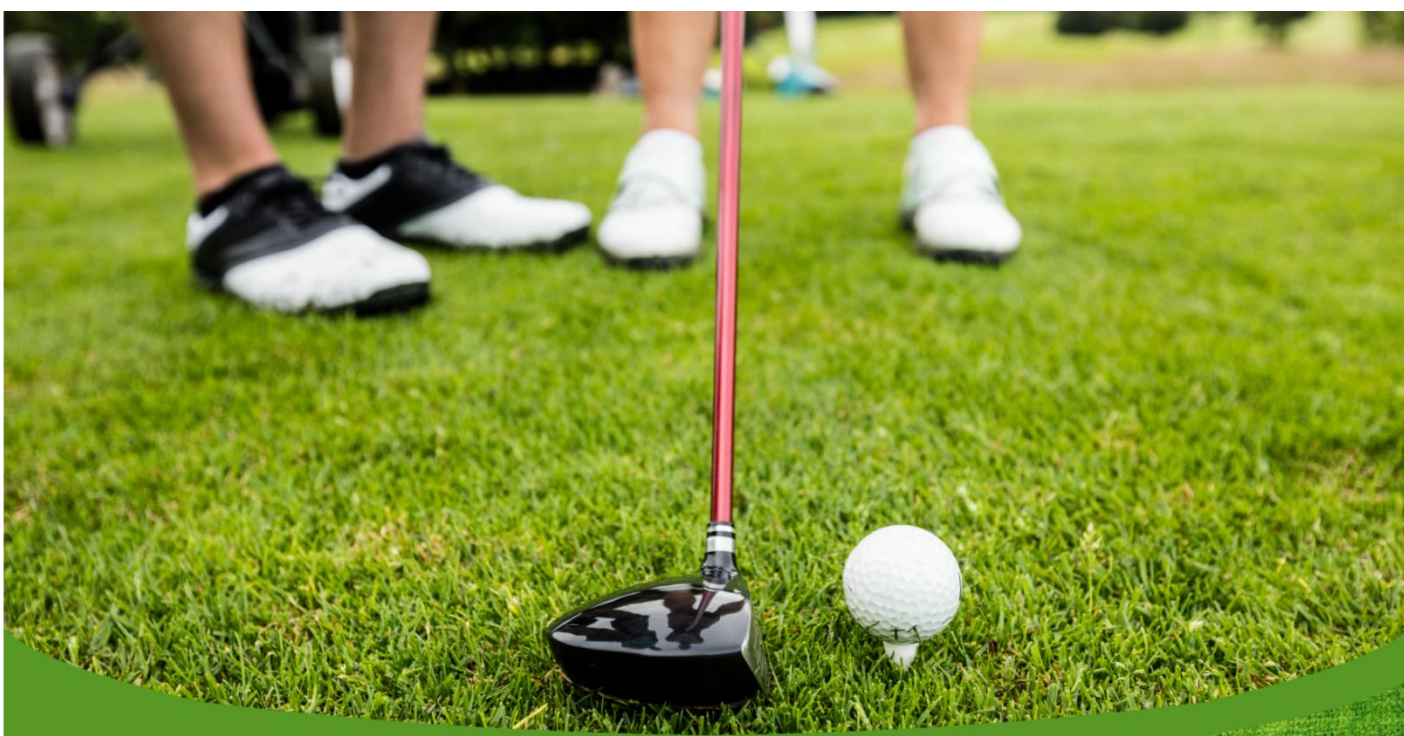
\$20 entry fee - includes Gourmet Burger

1st Place
6 months membership credit* and bragging rights!

ENTER ONLINE NOW
manawatugolfclub.com

*Terms and conditions: Entries open to members, affiliated golfers and non-golfers. Entries open to the first 64 players. Entry confirmed upon payment. Prizes non-transferable. If the winner is a current MGC member the 'Membership credit' is applicable to their current membership category. If winner is non-member 'Membership credit' can be selected from MGC current categories.





Discover Golf

with the Manawatu Golf Club

Give Golf a go!

When

Wednesday evenings starting
12th February for 3 weeks.
5:30pm - 7:30pm.

Mixed and women's only groups available

Just \$199^{pp}
All inclusive package

What you get

- 1 x Wedge & Putter for you to keep! (valued at \$138 per club)
- 3 nights of professional teaching in small groups
- Each lesson ends with a complimentary drink and nibbles
- 2 Months of Membership at Manawatu Golf Club
- 4 evenings and 4 Sundays of at "5@5" (normally \$5 per session)
- Programme valued at over \$400

Open to the first 36 paid entries. Only available to non-members of the Manawatu Golf Club

Register online now to secure your place
manawatugolfclub.com

Or call 06 3578793

19 Centennial Drive, Palmerston North



EST. 1895
MANAWATU
GOLF CLUB



JUBILEE EVENTS

New details now available!

Friday 17th April

•GOLF -

Individual Stableford format. 9 or 18 hole options. 9 Hole shotgun start at 9:30am, 18 Hole shotgun start at 12:00pm. \$15 per person for 9 Holes, \$30 per person for 18 Holes.

•EVENING FUNCTION -

Fantastic dinner function with multiple themed food stations and a great live band. A fun casual cocktail event, like never before seen at the MGC. Come along with friends for a entertaining evening.

Cash/Card bar will be available

\$65 per person

Saturday 18th April

•MORNING TEA -

Official morning tea and jubilee cake cutting. Themed as a high tea event with fine bone china and wonderful food. A lovely relaxed morning

\$20 per person

•GOLF -

Foursomes format. 9 or 18 hole options. 9 Hole shotgun start at 8:30am, 18 Hole shotgun start at 11:00am. \$15 per person for 9 Holes, \$30 per person for 18 Holes.

•EVENING FUNCTION -

Formal seated evening function with a plated 3 course dinner. Enjoy a drink on arrival and wines on the tables. Light dinner entertainment and Live band to play later in the evening. No need to book a table - tickets can be purchased as singles, doubles or any other quantity

\$110 per person

BOOK YOUR TICKETS NOW!



EST. 1895

MANAWATU

GOLF SHOP

MANAWATU GOLF CLUB

Pro Shop

Hi Everyone.

Happy New Year everyone. I hope you all had a great Christmas and New Year, and managed to have a break over the holiday period as well.

As for us in the shop, we all managed to get some sort of break, which was great to recharge the batteries and start 2020 off charging!!! Tim spent his break at home in Reporoa, Guy & Andre stayed mostly in Palmy, Lisa spent her break watching her son Max play cricket (RIGHT is a photo of Max batting).



Presidents Cup: In the second week of December the Golf Shop took a trip to the Presidents Cup, organised and hosted by Andre White. From what I have heard from members who went along it was fantastic. Below is a photo from the MGC Presidents Cup trip from their reserved seating on the 16th hole. I also went, but as a family trip. Below is a photo of both my boys with their Dustin Johnson and Justin Thomas fan shirts on (I think I need to talk to them about supporting the right team 😊). We also had a fantastic week and I highly recommend going the next time the Presidents Cup is down under. If you are interested in any further golf trips please let us know as we are always planning for the next one.



If you are wondering where Andre is at the moment, he is in The States again catching up with our own PGA Tour Player Tim Wilkinson. The photo is of them at the TPI facility in California just north of where Tim played last week at Torrey Pines. For Coaches this is one of, if not the best, facility in the world for testing. It has all the gadgets. In short it is our paradise.





EST. 1895

MANAWATU
GOLF SHOP



MANAWATU GOLF CLUB

Pro Shop

Tip of the Month - Starting the New Year:

This is a great time of the year to give your game a WOF. If you are wanting to have a great year on the course and finish the year like this guy...



Here are some questions you want to ask yourself:

- What do I want to achieve this year regarding my golf?
- What do I need to do/change/improve to achieve my goals?
- Do I need help to achieve this (Lessons)?
- Do I have the right equipment?

Those are some really simple but effective questions. If you want to improve your golf for 2020 this is a great place to start

Just remember if you have any questions regarding your game please don't hesitate to ask us, we are here to help!

Your Proshop team - Alan, Andre, Lisa, Tim and Guy



Congratulations to Ben Harwood who graduated as a fully qualified PGA Professional in December.



Congratulations to Tim Berry who won the PGA Trainee of the year for Stage 1 in 2019. It is awarded on a mixture of academic and playing standards throughout the year.

A message from the Club Captain

Club Captain Report

Welcome everyone to the 2020 golf season. We are already flying into the year with some great successes. First a well patronaged Opening Day resulted in Jackie & Stephen Blackmore winning with 44 Stableford points in the Canadian foursomes.

For the second year in a row, our young up and coming star, Lily Griffin, started the year in style, winning the Maraenui Women's Matchplay and then came 2nd in the NZ Speedgolf champs with rounds of 84 in 57 minutes and 78 in 58 minutes. She has come 2nd twice now to ex NZ professional player Liz McKinnon! Lily is currently ranked 8th in the world for Speed golf!!!



Not a great Joe Kells Memorial for Manawatu members. The Joe Kells is the first order-of-merit event for Manawatu-Wanganui Golf Association in 2020. Ewan Westergaard came 7th equal, 7 shots behind returning Palmy member Rhys Harold. Regan McConaghty came 10th and Micah Bremner who has been playing well at home recently, came 12th equal with Kaleb Idemaru & Sam Smith. Being a family man now must be good for Jason Westwood as he came 5th equal on Net. Lisa Herbert came 7th in the Women's event.

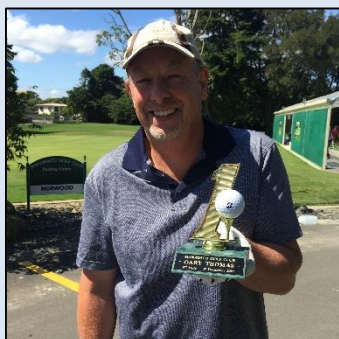
For the men, the season starts with the Craigs Investment Partners Tankard on February 1st. Thanks to Ewan Westergaard who has kindly continued with sponsoring this monthly event for 2020. The following Saturday (8th) sees qualifying for the B&A and Watson Cup handicap match play events with the top qualifier winning the Kenneth Neal Trophy.

Thanks to everyone for the support on re-electing me as Club Captain. I understand a few were concerned with the extensions the Match Committee gave in 2019. The 2020 Match committee will consider this when we first meet. The current Match Policy document does state that "No time extensions will be given although the Match Committee may consider short extensions on compassionate grounds". This policy will be reviewed by the new 2020 match committee and its decision communicated.

My apologies for missing both Opening Day and the AGM, but we are away on holiday in Wanaka before competing in the NZ Master Games in Dunedin.

Richard Shaw - Club Captain

Hole in One Congratulations!!



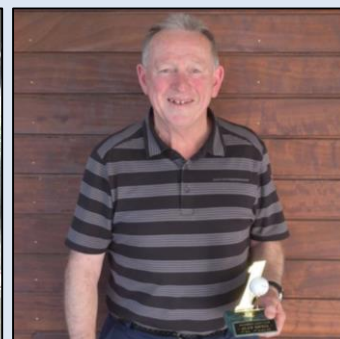
Gary Thomas - 4th Hole on 1st December 2019



Ethan Dodds- 16th Hole on 2nd December 2019



Nigel Tristram - 4th Hole on 20th November 2019



Alan Savell - 4th Hole on 2nd October 2019

A message from the Club Captain

MENS GOLF - Information for Manawatu Golf Club Men's Competitions in 2020

Saturday Men's Stroke play competitions

Saturday 1st February marks the start of the Saturday competitions for 18-hole men. Pretty much every Saturday for the next 9 months there will be either a Net, Stableford or Par club competition. To enter all you have to do when you get your card out is to choose Yes for the Saturday competition (note this is different to the Proshop Competition). Over the season we will allocate points for your position in the field each Saturday based on the original USPGA tour FedEx cup points system. The top golfer in each division is awarded 500 points, points are then allocated down to 70th place (1 point). In a change from last year we will calculate whether you are in division 1 or 2 at the end of the year based on your average Saturday Handicap through the season. The divisions are based on handicap less than 16 (Division 1) and 16 or greater (Division 2). For the last 5 years the average handicap of men playing on Saturday has consistently been around 16.

As we have done for a few years now the overall points table combined from all 3 strokeplay competitions (Stroke, Stableford and Par) is published throughout the season so you can see how you are doing relative to your peers. Because we will determine which division you are in at the END of the season, this table will show provisional total FedEx cup points

2020 Men's Shootout

If you wish to enter the men's shootout you will also need to enter the Saturday Club Competition for your scores to count. In the Card room I will post a table of ALL Saturday players from last season so you can see your top 8 stableford scores over the 2019 season. Entry to the Shootout is \$30.00 to be paid by March 14th for results in Feb-Mar rounds to count. You may enter later in the season, but qualifying rounds start from when the entry fee is paid. Pay money to Warren Williams, Richard Shaw or the office.

The top 19 golfers entered in the shootout at the end of the season will then play off over 18 holes on Sunday October 18th. In the final the player with the worst net score on each hole is eliminated. Ties are decided by a chip or putt-off.

2020 qualification will be based on the entrant's 8 best Saturday Stableford scores over the season. Please note though that "gimmes" should only be accepted once zero points are available.

Qualifying starts Saturday 1st February and ends on Saturday October 10th. If a tie exists for the 19th position, there will be a playoff down the 18th after play on Saturday 17th October 2020.

Every Saturday round (am or pm) will be eligible, except for Saturdays with an away inter-club fixture. When getting your card, you must enter Yes for entry into the Men's Saturday competition for your score to be included in the shootout table.

If you play twice on a Saturday, only the first round will be eligible.

Please note that FedEx cup points and Shoot out scores are NOT counted when we have away interclub events.

A message from the Club Captain

MENS GOLF - Information for Manawatu Golf Club Men's Competitions in 2020

Craigs Investment Partners Tankard Club Draw Information

On the first Saturday of every month (February to December) the Men play for a Craigs Investment Partners Tankard. This is a Stableford competition but for afternoon tee slots a club draw is carried out i.e. members are randomly allocated playing partners. To enter go to The Manawatu Golf Clubs public web page and chose MEMBER ACCESS – EVENT REGISTRATION

Entries close at 5pm the preceding Wednesday and the draw is generally loaded onto the booking system later that evening.

Some notes:

No requests for playing partners will be accepted unless you are playing a designated singles or 4-ball match.

Please arrange your matches prior to entering your Club draw booking.

Every attempt will be made to enter designated matches off the 1st tee but otherwise requests for starting off the 1st tee will be ignored.

We will attempt to honour playing time requests i.e. early (11.14 to 11.42), around midday (11.49 to 12.10) or later (after 12.17), but these cannot always be acknowledged. Providing a reason for a specific tee time may assist your request.

We attempt to mix up members teeing off the 1st or 10th tees over the season but please appreciate that this is rather difficult to do in a consistent manner.

Best Gross Shootout Competition

Similar to the men's stableford shootout, this competition captures those members with the lowest 5 gross scores over the club season.

The aims of this competition are

- To recognise our clubs' best golfers (male & female)
- To encourage low handicap golfers to play Saturdays
- Provide a fun competition for the club's best golfers

Rules of the competition

Eligible cards are those played on Saturdays during the club season off the club tees e.g. for Men typically Black or Blue tees. The golfer must enter the club competition for the day (not the Proshop competitions). As the women's course at Manawatu Golf Club is par 74, women's scores will have 2 shots deducted off them before inclusion in the best gross table. A member must have at least 5 qualifying rounds.

A message from the Club Captain

Best Gross Shootout Competition continued

At the end of the season the Match committee will run a 9-hole shootout with the 10 top qualifiers on Saturday November 14th starting at approximately 2.30pm from the 10th tee. There is an entry fee of \$15.00 which can be paid to the office or Richard Shaw. Entry must be paid by the 7th August 2020. If a member cannot play the designated date & time the next eligible member on the table may enter the shootout.

This shootout will be played off the stick with men playing off the blue tees and women playing off white tees. The person with the highest score on each hole is eliminated. In the event of 2 or more golfers tied on the highest score a chip-off or putt-off will be played with the person furthest from the hole eliminated. Note on hole 10, a par 5 for the women, all women golfers can take 1 shot off their final hole score.

B&A and Watson Cups

This is a Men's singles match play competitions based on handicap. It is open to men (and juniors) with full playing rights. There is one qualifying round (net) played on 8th February 2019. The top qualifier wins the Kenneth Neal Cup. The top 32 players compete for the B&A Cup and the second 32 compete for the Watson Cup. Draw will be prepared based on qualifying round ranking and displayed in the Card room and on the Club's website. Matches must then be played by:

Round 1 by Sunday 1th March, Round 2 by Sunday 5th April, Round 3 by Sunday 26th April, Semi-finals by Sunday 10th May and Final by Saturday 30th May

Please see Programme book for information on arranging matches. If you know that you will struggle to play any matches by due dates then please do not enter.

Handicap Matchplay: In a handicap match, the lower net score wins the hole. The handicapping system in Match Play is based on the difference between the players handicaps, so that a player on a handicap of 10 would have to give an 18 handycapper 8 strokes. These strokes would be allocated on the 8 hardest stroke holes. Where there is more than eighteen strokes difference between handicaps, players receive two strokes per hole where applicable. Matches all square after 18 holes continue from the No 1 tee irrespective of where the match was started, until a hole is won.

Richard Shaw - Club Captain

Congratulations to Brian Wilkinson on his impressive golf in the last couple of months! On 21st November Brian shot 2 under par, 70, which is all the more impressive as it was also 2 shots under his age! Then under a month later on 13th December he also got a Hole in one on the 4th Hole!



WOMEN'S GOLF

Club Captain's Report

Welcome to the 2020 golf season, a year in which we are to celebrate 125 years as the Manawatu Golf Club. Our Vintage Opening Day is on February 4th. We are asking the ladies to dress up in vintage clothing so that we can be mindful of our long history. It should be fun. We should also remember the upcoming Manawatu Golf Club 125th Jubilee Celebrations on the 17th and 18th of April when there will be hospitality and golf events. Don't forget to register for these events on-line or in the office.

Following our opening day, I look forward to the year of golf and to be working with the Tuesday ladies committee of Convenor Deb Archer, Jill Dixon, Alicia Boag, Barbara Stuckey, Sharen Port, Claire Davis and Lorraine Stachurski. I'm also looking forward to playing with the Saturday ladies and supporting Eva Heinrich and her committee and to supporting Dawn Lavender and the Senior 9 Holers.

Summer Golf

Many ladies have enjoyed a summer of golf with Maxine Whittfield winning the Summer Salver and the Summer Eclectics winner in Silver was Deb Archer and Bronze Gloria Campbell. The Karen Russell Salver for senior 9 Holers was won by Pam Hansen. The Field Summer Cup for best nett was won by Elizabeth Lander.

Pennants

Deb Archer is again the selector for Championship and Weekend Pennants, Angela Pivac is the selector for Silver and Megan Waugh the selector for District Pennants. If you are available for pennants please let the selectors know and if you are selected say "YES".

The first round for Silver and District Pennants is on February 10th at Rangatira. Both Championship and Weekend Pennants have a bye on February 16th so round 2 will be at Feilding on February 23rd.

Thursday Club starts on February 13th with Alicia Boag in charge.

February Programme

- Feb 4th: Opening Day
- Feb 11th: Stableford
- June 18th: LGU & Putting
- June 25th: Par Orange tees

Thursday Club - 13th Feb

March Programme

- March 3rd Possible away trip to Rangitikei
- March 10th LGU & National Teams



WOMEN'S GOLF

Club Captain's Report Continued

I am looking forward to seeing many ladies playing in 2020 and also supporting other clubs in the district by playing at their open days. The first Open Day on the calendar is at Eketahuna on February 20th. The more players we have representing us, the greater chance we have of winning the Race and retaining the Susan Farron Shield.

Happy golfing.

Jill Clifton – Ladies' Club Captain



Congratulations to Robyn Higgins for her hole in one on the 11th Hole – 3rd December

New Zealand Women's Interprovincial

In December the Women's Interprovincial was on at Maraenui in the Hawkes Bay. The Manawatu-Wanganui team included Lisa Herbert from the Proshop and Lily Griffin, while the No. 1 Tara Raj is regularly coached by Alan Hyatt and is a secondary member at MGC.

The team did very well and made it to the FINAL where they unfortunately went down to Auckland 3-2. Well done to the team for representing the region so well!!

Tara was also named player of the tournament as she was unbeaten for the week!



MGC was well represented by Janette Gain and Edna Short in the women's Regional finals of the NZ BMW Golf Cup played at Millbrook on 20th January 2020 along with Martyn Nail and Ashley Short in the Men's division one.

Janette as winner of the NZ Women's BMW title will represent NZ in the BMW Golf Cup International World Final in South Africa – March 2 to 7 2020. THE NATIONAL Champions of 40 countries will compete.

Well done Janette and enjoy your trip to South Africa!

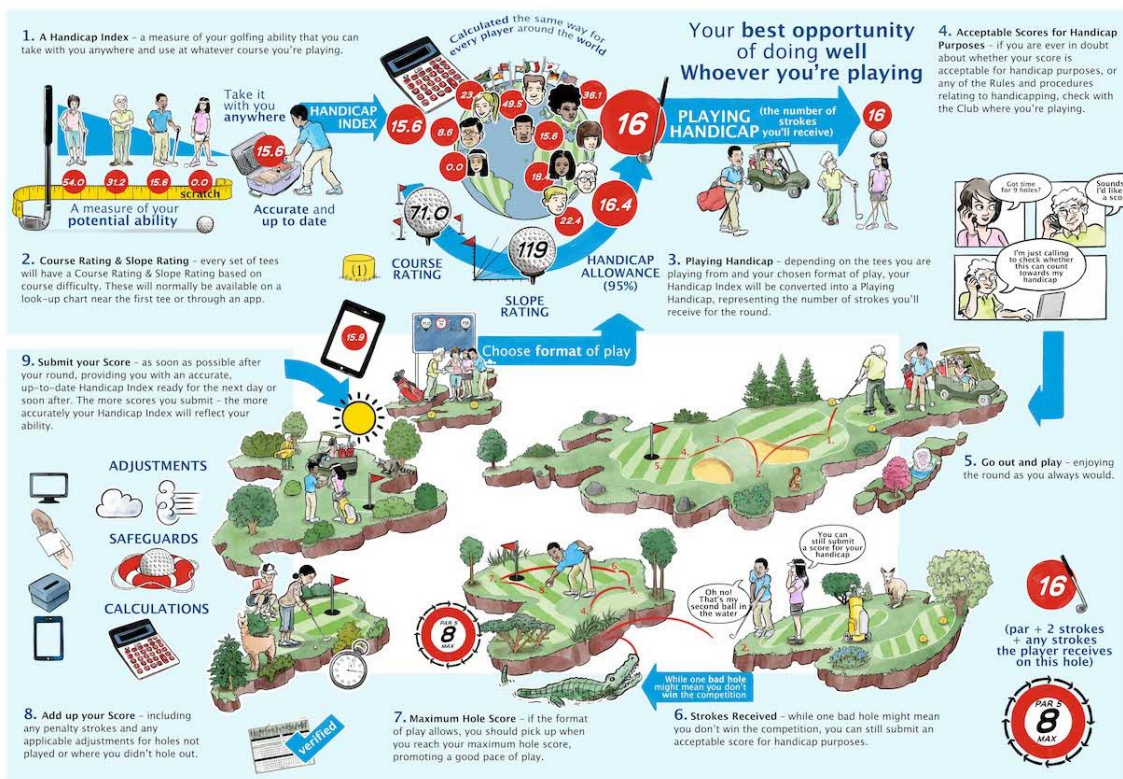
World Handicap System

In early April the World Handicap System (WHS) will be introduced in NZ.

Here is a reminder of the key components of WHS

- All golfers will have a handicap index that can be used equitably anywhere in the world
- The best 8 of your most recent 20 scores will be the first consideration in calculating a handicap index
- Handicaps will be revised daily or soon after score cards have been entered in to the system
- A daily revision of all handicap records will look back 12 months and locate your lowest index in that time. A cap starts to trigger when your index is 3-5 higher
- A new method of reduction will apply for exceptional scores
- Each night after score cards have been entered, there will be an assessment of the playing conditions on the day. If outside of what is expected, the course rating could move up or down.
- 9-hole scores will be scaled up to an 18-hole score for handicap purposes, using the equivalent of 17 stableford points for the back 9.
- The slope number will still be used to calculate a course handicap, but with the new addition of course rating minus par. The result means more inclusivity and 36 stableford points will represent playing to your handicap

What will the World Handicap System mean for you, the player?



Keep an eye out around the clubhouse for more information closer to the date of change over

NINE HOLE NEWS

Here we are into the "New Year" with weather being very kind for golf.

We ran a Summer Competition for best stableford and best Gross. This took the best 4 rounds over 8 weeks and included 48 participants. Winners being Best Stableford - Tania Leslie and Best Gross - Liz Burgess. Well done to you both.

Many 9 holers played in the club opening day last Saturday some doing really well. A big congratulations to Jackie and Steve Blackmore on their win. It was a most enjoyable day.

On Wednesday we had our Opening Day and played a fun Ambrose competition including 38 players. A wonderful start to the New Year.

Happy New Year and Good Golfing to you all

Colleen Fraser & Wayne Revell - Nine Hole Convenor

Rules Corner

Welcome to the first Rules Corner for the new golfing year. We have now had a full 12 months playing under the new Rules of Golf and members seem to be adapting to these new rules well. There have been a couple of articles recently published in the NZ Golf magazine (Dave Mangan from NZ Golf) and Pacific Golfer (Kevin Tregunno, Northland senior golf referee) which have addressed the vexed question of Local Rules covering "preferred lies" (also known as "lift clean and place", "winter golf rules" and on our course as just "Placing"). Several members have approached me for comment on these articles seeking clarification of the responsibilities of players under any local rule which permits "preferred lies".

I should start by stating that this has been a very controversial issue for many years and it is fair to say that the two major controlling bodies (the R&A, USGA) discourage the overuse of these Local Rules and clearly suggest their use should be limited to "occasional local abnormal conditions that might interfere with fair play". They also clearly state that "such a Local Rule should be withdrawn as soon as conditions allow".

These bodies also stipulate that any Local Rule permitting preferred lies be restricted to apply only to those parts of the general area mown to fairway height or less. Committees have some discretion as to where on the course preferred lies are allowed. In our Club, preferred lies are permitted on the fairway of each hole being played, with the player required to place a ball in the allowed relief area – within 15cm from the reference point (spot of the original ball), not nearer the hole and in the general area. It is interesting to note that when professional tournaments are played under a preferred lies local rule (usually following extremely wet lead up to a tournament), the allowed relief area is within 1 club length from the reference point.

Rules Corner Continued

The two articles I referred to earlier mainly addressed the issue of whether under a Local Rule allowing preferred lies, a player is required to mark the ball before lifting, cleaning and placing the ball in the defined relief area. Under the old rules, it was mandatory for a player to mark the ball before lifting, cleaning and taking free relief as per a local rule allowing placing. Failure to do so could incur a 1 stroke penalty.

The new rules have tried to standardise the procedures for players taking relief under any of several Rules.

If a ball lifted under any rule, is required to be replaced on its original spot, it is absolutely mandatory the position of the ball be marked before it is lifted. Failure to do so incurs a 1 stroke penalty. Some examples of this requirement include lifting a ball, for identification, to see if it is damaged, that interferes with play, and to determine if it may be embedded.

There are many instances when a player under an applicable Rule of Golf (or Local Rule) may lift a ball and place or drop it in a new location within a defined relief area - some examples include taking relief from abnormal course conditions (GUR, immovable obstructions, animal holes), taking relief from penalty areas, taking relief from an unplayable lie and the topic of this discussion, when proceeding under a Local Rule allowing preferred lies. In all of these situations there is no absolute requirement for the original position of the ball to be marked before it is lifted and there is no penalty applicable if a player does not mark the ball before lifting.

These situations merely require the player to place or drop the ball in the defined relief area. The onus is on the player to ensure the ball is placed or dropped in the correct way and comes to rest in the defined relief area. Playing a ball from outside this defined relief area can incur the general penalty (2 strokes in stroke play, loss of hole in match play).

It is interesting to note in professional events played with a "Placing" rule in effect, that all professionals still mark the position of the ball before lifting – this in spite of the generous relief area (1 club length) they are allowed to place their ball. Clearly they do this to ensure that they place the ball within the defined relief area.

Under our club Local Rule for "Placing", the defined relief area (15cm) is much smaller than that provided for professional events. However I encourage members to follow the example set by the professionals when proceeding under the Local "Placing" Rule. Even though there is no penalty if the position of the ball is not marked before lifted, I urge all members to mark the position of the ball before lifting, and taking it to their trundler/bag for cleaning prior to placing it in the relief area. By following this procedure, players are removing all doubt as to correctly identifying the relief area. I note especially under summer conditions when the ball does not become excessively dirty or mud caked, many players simply pick the ball up from its original position without marking, give it a quick rub in the hand and then place it within the required relief area (usually a few cm from its original position). There is no penalty applicable in this case, however the player is responsible for ensuring the ball is placed in the defined relief area and failure to do so can incur the general penalty. To avoid this risk, again I suggest players still mark the position of the ball before lifting and placing.

COURSE REPORT

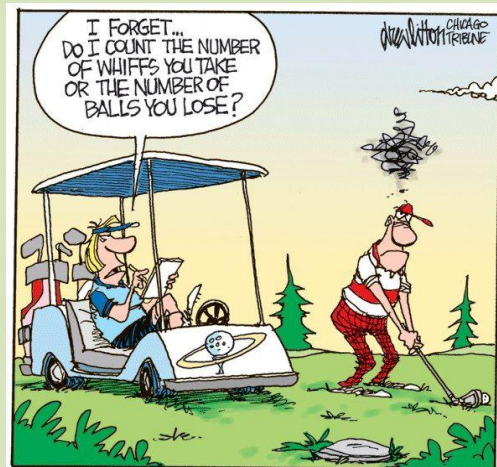
Happy new year to all 😊, I hope everyone had a great festive season and are easing their way back into work. The weather over the last few months has been more like spring than summer. Bring on summer. Has everyone made the golfing goals for the year a head?

Greens have recovered well after the renovation in December. They are rolling true with a bit of leaf on them now, we will manage the speed as we lead into the Super 6's.

Tees & surrounds are looking great with good cover. Finishing preparation will be on going up until the tournament. Fairways have held on well, heat and irrigation issues have mostly been sorted out and time will heal the thinner areas. Very happy with the surfaces before us. Rough will continue to be sprayed as well as the extra areas when the unsettled weather patterns allow us.

I wish everyone well in the coming month of golf as the competitions increase. Please continue to repair your pitch marks and replace your divots. Be aware of where you are driving in the golf carts please. It is more important as we lead into the Super 6s and 125th Jubilee.

Kiel Stechman - Course Superintendent



NEW MEMBERS –

The Committee would like to confirm the acceptance to the Club of the following new members who applied in November and December 2019

7 Day Member – Joe Baker, Minoru Funakoshi

Under 30 - Caleb O'Neill

Country - Piak Kim Chia, Soon Tiam Lim, Rick McVerry

5 Day Member - Ray Iwikau, Russell Johnson, Cody Sloman

9 Hole – Harry Chin, Jackie Choi, Maria Funakoshi, Michael Griffin, Mj Kang, Manaaki Mita, Giovanni Ratima-Mita

Full Playing Junior - Jayden Burgess

Restricted Junior - Angus Carthew, Jedd Fraser, Frederick McVerry, Ryan Peters

Social - Steve Welch

During this same period, 24 members resigned bringing our total membership number to 1003 members. We wish our resigned members all the best and welcome our new members, we are sure you will enjoy your time at the Club.

What's on in February...

Please note this programme is subject to change. Please remember to always check and book via the tee sheets on the Club website or at the card room kiosk for available tee times.

February

■ MEN
 ■ WOMEN
 ■ MIXED
 ■ EVENT

MONDAY		3	10	17	24
TUESDAY		4 Women's Opening Day Marj Crystall Cup Stableford	11 Stableford	18 LGU & Putting	25 18 Hole Par 9 Hole: Stableford
WEDNESDAY		5 9 Hole: Stroke	12 9 Hole: Stableford (Entries open for Walker Georgel Cup)	19 9 Hole: Par	26 9 Hole: Stableford (Entries close for Walker Georgel Cup)
THURSDAY		6 Waitangi Day	13 Thursday Club Manawatu Toyota Golf Day	20 Nuview Wealth Solutions Business House	27 Golden Coast Vets
FRIDAY		7 Twilight Golf 3pm-5.30pm start	14 Twilight Golf 3pm-5.30pm start	21 Twilight Golf 3pm-5.30pm start	28 Asteron Golf Tournament 11.45am tee off Twilight Golf 3pm-5.30pm start
SATURDAY	1 Craig's Investment Tankard Draw 9 Hole: Club Opening Day, Saturday Women's Opening Day Committee Choice	8 B&A Watson Qualifying (Kenneth Neal Cup) Stroke 9 Hole: Stroke Stableford	15 Par 9 Hole: Stableford LGU & Putting	22 Stroke 9 Hole: Par Par	29 Stroke 9 Hole: Stableford LGU National Teams Day
SUNDAY	2 3rd Round Summer Singles/Fourball to be completed	9	16 Men's A Grade Pennants at Manawatu Women's Championship & Weekend Pennants	23 Semifinal Summer Singles/Fourball to be completed ANZ Grand Master Putting Cup	



SPONSOR OF THE MONTH



PLEASE CONTINUE TO SUPPORT OUR SPONSORS AS THEY ARE SUPPORTING YOUR CLUB - Major Sponsors Below

