



June 2021

Firstly, a warm welcome to our new General Manager, Chris Wilson, who commences work this Wednesday, 2 June. Pop in and introduce yourself next time you are at the club.

May has been another busy month in all aspects of the Golf Club operation.

The Pro Shop continues to go gangbusters, with lessons for May having been fully booked, with strong demand moving into June. Sales continue to be strong, although stock is getting harder to obtain. The ball dispenser has been a great addition to the club. Members are loving being able to come and practice when it suits – it has been great to see the range lights on at night, and members out practicing. The token bulk purchase packs (these replaced the range membership) have been extremely popular.

There is nothing new to report re the Riverland Sale Settlement. We still expect to be paid late June or early July. (What a process this has turned out to be!)

We are pleased with the response to the recent membership survey. More than 30% of you responded, and we thank all of you who took the time to complete the survey. The overall comments have been excellent. Issues raised will be discussed by the committee. It is reassuring to know that our members believe the club is tracking well in most aspects. We, as a committee, while pleased with the result, realise there are things that need addressing – we are always looking at ways in which we can improve our club.

The carpark has finally been sealed – this was done on Friday 28 May. We now just need to use it. The next stage will be to sweep off the loose metal, then it will be marked. I don't have a time frame at this stage. Thanks once again to the “retired” Tony Trass for pushing things along.

May has been really busy in the café, (yet again) with numerous functions, and just busy every day. Word is out there that we have the best food in town along with the best staff. An unbeatable combination.

Saturday saw the annual House of Travel Broadway Quiz, with 211 people taking part. This event sold out in under 3 days! A great night as always, with our host, Paul “Ots” Otway in fine form. A superb buffet, with the usual outstanding staff, makes this one of the best functions on the calendar.

Big thanks to Rach for all her great work in making the night go like clockwork.

Next year will be the 10th year, quite an achievement. Huge thanks to Kate Harris and the team at House of Travel, for sponsoring this night, especially with times being so tough in the travel industry. If you are planning a holiday, please pop in and see the team there, and let them know you are from our great club.

## MESSAGE FROM THE PRESIDENT CONTINUED

On June 17, Grant Puddicombe, our course architect will be meeting with the committee, to go through his proposal. The plan is to meet with Grant, then the committee will discuss his ideas at our 29th June meeting. All going well, we will get Grant back to talk to the membership on his ideas. I can assure you all, that no decisions will be made on any change(s), without full consultation with the entire membership.

We have a large number of new members, who are also new to golf. Please make them feel welcome, and be patient. We all have to start from somewhere. To those of you who are going out with them during the week, and also on Sundays, a massive thank you.

Kiel is in the process of receiving quotes for the irrigation system. This will be a major project. Once we get some idea of costs involved, the committee can look at how we are going to go about funding it. Once again, the membership will be kept fully informed – this is not going to be cheap.

Finally, if you haven't got your tickets for the supper and dance on Saturday 26 June, with that outstanding band, the Relatives, get in quick. We already have over one hundred people attending. Dust off those dancing shoes, and let's party!!

Thanks once again to the "raffle boys", Rodders and Vonky for their generous donation, which has kept the ticket prices down. This night will be a ripper!

That's it from me, have a great month on and off the course.

Brent Cawthray



## CONGRATULATIONS TO THE TRIVIA WINNERS – Korowha Aotearoa!! Pictured below with sponsors House of Travel Broadway



## Pro Shop

Hi everyone,

I hope you are all managing to stay warm on the course. In some local news Don Finlayson, who has owned and run the Golf Shop at Feilding Golf Club for over 16 years, is retiring. Congratulations on a successful business and doing a lot of great work for golf in this region.

Phil Mickelson is still staying relevant on the major show - what a win that was a week ago. The game over the last few years has been dominated by distance and a young generation of athletes coming through, like Brooks, Dustin, and Bryson, just to name a few.

Phil is very much staying relevant with these young bombers of the ball. Phil even recorded the longest drive of the week on the 16th hole at 366 yards (329m). He has set up his driver to help him achieve this distance and that helps him still compete with the young guns. He has a 6\* driver set at 5.5\* and 47.5 inches long light weight shaft (standard length driver is 45"). Hopefully he can carry this form into the US Open, which he needs to win to complete the grand slam.

Update on our own PGA Tour left hander - Tim Wilkinson: Tim is 185th on the FedEx standings at present. He has been playing well of late but just missing the cut by 1 shot, and when he has made the cut he has had one "not so good" round that has held him back from a really high finish. He has around 7-8 events left in the season to move that number to inside the top 125. Tim's next event will be the RBC Canadian Open where we may see his name around the top of the leader board.

Tip of the month: The Golfer's Winter Check list.

#1: Hybrids: If you haven't already, then you should invest in some hybrids. They are much easier to hit than longer irons and a big plus for winter because they are a lot easier to hit higher in the air which means they will carry further and go longer than an iron in winter time.

#2: Rain gloves: This tip is my favourite! I always carry at least one rain glove (sometimes two for both hands). The wetter they get the more grip they have and they feel just like a normal golf glove. You can also get ones that are warmer as well!





EST. 1895

MANAWATU

GOLF SHOP

MANAWATU GOLF CLUB

## Pro Shop

#3: Winter mitts: These are great! They velcro onto your trundler so when you are pushing your cart your hands can stay nice and warm!!!

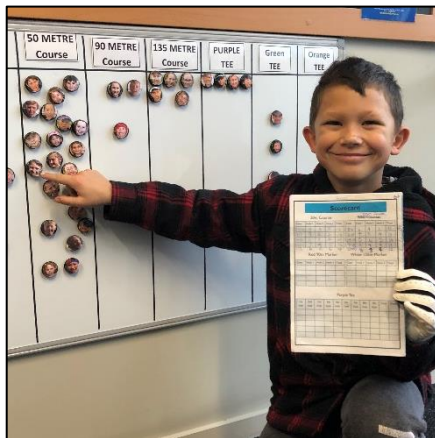
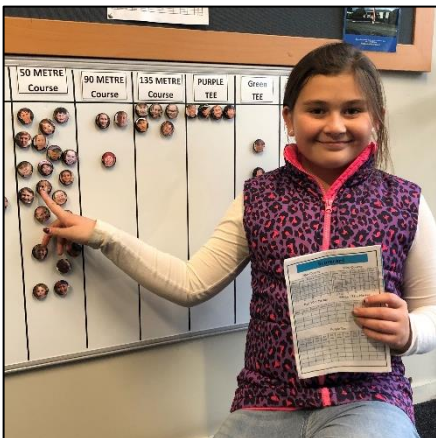
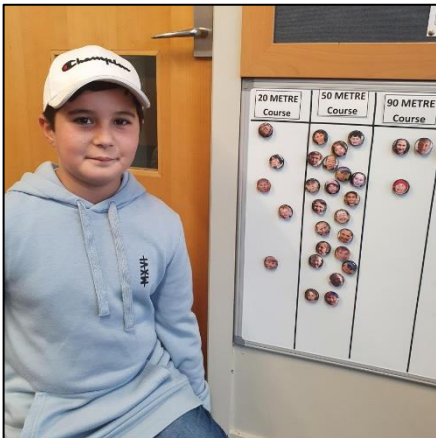


#4: Winter clothing: Make sure you have a good rain suit, rain hat, and waterproof shoes with healthy grip.

#5: Hit more club: The ball is cold, the club face is cold, your body is cold, and this all leads to the ball going a shorter distance.

Just remember if you have any questions regarding your game, please don't hesitate to ask us, we are here to help!

Your Proshop team - Alan, André, Lisa, Tim & Brydie.



Well done to all the Junior golfers who have been putting in the practice and coming out to play. These are some of the kids who have moved up to harder and longer holes on our course. Great work!!

## A message from the Club Captain

What a great day we had for the Manawatu Open this year. A good quality field from 23 different clubs turned up to play the event. For some time now the Manawatu Open has been played in October, however in recent years the NZ Golf calendar has become very congested in October-November resulting in the Open competing with other marquee events and thus struggling to get good fields.

The date this year fitted in nicely between the end of Pennants and the new MWGA 54-hole stroke play event at Feilding.

Well done to Jimmy Hydes and Tara Raj for their wins. Big thanks to Rachel especially but also, Brent, Savs, Boz, Grayson, Ian and the Proshop for helping set-up and run the day. The Greens staff presented the course in great condition as you would expect with the greens especially running superbly. Thanks to Peter Blackwell from Gilmours for sponsoring and presenting to the winners.



### Men Div 1 (+7.0 to 6.3)

Pos	Name	R1	R2	Total	Home Club
1	James Hydes	68	66	134	Gulf Harbour
2	Adam Church	70	69	139	Judgeford
3	Ethan Jones	67	72	139	Manaia
9	Regan McConaghty	72	74	146	Manawatu
11	Rhys Harold	69	77	146	Manawatu
16	Kaleb Idemaru	78	76	154	Manawatu
17	Sam Smith	80	76	156	Manawatu
19	Campbell Ogilvie	77	79	156	Manawatu
24	Preston Tatana	80	80	160	Manawatu
32	Mark Denton	95	79	174	Manawatu

### Women

Pos	Name	R1	R2	Total	Home Club
1	Tara Raj	68	74	142	Wanganui
2	Casey Chettleburgh	73	74	147	Palmerston N.
3	Lisa Herbert	76	77	153	Manawatu
10	Rebecca Hopper	96	100	196	Manawatu

### Men Div 2 (6.4 to 36.0)

Pos	Name	R1	R2	Total	Home Club
1	Richard Shaw	77	83	160	Manawatu
2	Christopher Hunt	81	83	164	Paraparaumu
3	Bert Chang	86	83	169	Manawatu
6	Bevan Clarke	85	87	172	Manawatu
7	John Myszczyzyn	86	90	176	Manawatu
8	Kaleb M Fagan	88	91	179	Manawatu
9	James Lovegrove	84	96	180	Manawatu
11	Leigh Thomas	88	97	185	Manawatu
15	Bradley Morgan	98	94	192	Manawatu
16	Jerome Robinson	97	95	192	Manawatu
17	Steve Gill	97	95	192	Manawatu
18	Jack Clarke	96	97	193	Manawatu
21	Caleb O'Neill	99	112	211	Manawatu

Well done to Ghee Tan for winning the May tankard with 40 points by countback from Phil Wilson and Mike Fagan.

The Feilding Interclub is on June 12th with our ladies away while the Men host. For the Men we have requested just 24 Feilding players to come over. If you wish to play in the Interclub, please fill in the sheet in the Card room. If there is a specific Feilding member that you would like to play against and you know they are coming over please note this also. Once the draw is loaded prior to the 12th, the booking sheet will be opened for remaining members to book their own rounds.

Saturday June 12th is the date for the MacLennan Calcutta.

## A message from the Club Captain Continued...

### MacLennan Rounds "Play-by-dates" have changed

The MacLennan Round 2 play-by-date and the Calcutta have been extended out by one week due to the clash with Queen's birthday weekend. The Play-by-date for Round 2 and the Calcutta will now be June 12th. As a result, the Round 3 play-by-date has been extended by one week to the 3rd of July.

To avoid the situation of these critical matches being played late on a Saturday, often in poor light, we have allocated 2 tee times each Saturday afternoon at 12.10 & 12.17pm for Round 3 and subsequent MacLennan matches. Just see the Proshop or Richard Shaw to book these. If the tee slots are not booked by the Thursday prior to the next Saturday then they will be opened to all.

At the latest Course Committee meeting there was discussion on the possibility, that the condition of the Blue tees may deteriorate significantly if a wet winter ensues. Usage and thus wear and tear on the course has increased significantly this year, probably due to members not travelling combined with increased membership. If instructed by greenskeepers, we will use the Red tees rather than the blue tees, including Wednesday and Saturday competitions. On such days, cards for the Blue tee blocks will not be allowed to be issued. We will try to forewarn as best we can either on the Clubs News page, the weekly E-mail and Facebook.



## The Relatives Band live at the Manawatu Golf Club

Saturday 26th June

7:00pm - Happy hour

8:00pm - Band starts

Tickets \$30 per person includes light supper

# WOMEN'S GOLF

## Club Captain's Report

Large groups of ladies have enjoyed gathering on Tuesdays and Thursdays to play on our great course. The main reason for the increased numbers is the uncertainty about whether it is safe to travel overseas so most of us are staying home. With more time on our hands, we have had the opportunity to enjoy more golf.

## PENNANTS

The ladies have performed admirably in all the pennant competitions. After the great wins by the Championship team and the Weekend team we find ourselves at the top of the table in the Silver competition and equal first in the District competition. There are still four rounds to go so anything could happen. However, there is an air of quiet confidence in the teams so I'm sure they will perform well in the coming weeks.

## Hokowhitu Cup

On Saturday May 15 a small number of players (6 from mid-week and 9 Saturday) gathered to contest the Hokowhitu Cup. They braved the stormy conditions and were relieved to finish their rounds. After the stableford scores were averaged the mid-week ladies were the clear winners. Well done to all who took part.

## Club Championships

The first qualifying round for the 2021 Club Championships has been played. Players have 3 chances to qualify. The 2nd qualifying round will be held on Saturday June 19th and Tuesday June 22nd and the third on July 17th and July 20th.

The handicap divisions for the Club Championships are:

- Silver            0 - 18.4
- Bronze 1        18.5 - 26.4
- Bronze 2        26.5 - 40.4



Julie Meiring and Janine Healey winners of the weekend pennant



Janine Healey (Saturday Convenor) handing over the trophy to Deb Archer (Mid-week coordinator).



## WOMEN'S GOLF CONTUINUED

### June Golf

Since June 1st marks the beginning of winter starting times on Tuesdays will be a little later at 9:15am. Thursdays remain the same.

- 8th Par
- 15th Par
- 22nd LGU 2nd qualifying in strict handicap order.
- 29th Stableford

### Thursday Club

- 10th
- 24th

The interclub competition with Feilding will be held on 12th June and the ladies will be travelling to Feilding this year.

Enjoy your golf and the crisp winter mornings

Jill Clifton - Women's Club Captain

## NINE HOLE NEWS

Here we are another month gone and into winter now, with a frost delay on Friday. We have played in several open days but the weather has not been very kind. We had an open day at Otaki and another at Belmont both played in intermittent rain but our members represented us well, someone always in the winning circle.

Last Monday we had our tri series against Feilding and Palmerston North a great representation from the three clubs. The weather was not kind, which obviously made a difference to the scores, as they were not very good across the board. BUT we managed to win by 2 points. Not a great buffer to begin with, but a win is a win.

A big thankyou to our members for making it a successful day and a huge thanks to our wonderful cafe staff for coming in specially to feed us.

The Walker/Georgel competition is down to the final. May the best pair win. The Gillespie and Lavender competitions are underway with some very close matches even having to play extra holes.

Feilding have their open day on Monday with a good number of entries from Manawatu. Hopefully the weather is kind and we play well. Thanks to those nine hole members helping with new members on a Sunday encouraging them and making them welcome.

Good winter golfing

Colleen Fraser - 9 Hole Convenor





# Fledgling Golf

## at the Manawatu Golf Club

Throughout May we have had several new golfers, many of whom participated in the recent Discover Golf programme, out on the course Saturday and Sunday afternoons enjoying the game. As well as improving their game and gaining confidence out on the course, they have been learning more about golf etiquette and speed of play and meeting a few more members in the clubhouse afterwards! Sincere thanks must go to Wayne Revell and Julie Meiring for volunteering their time to help our new members.

This past Sunday saw our new members joining several existing members in a 9-hole mix'n'mingle Ambrose competition. There were a few rogue shots, and many laughs along the way. Congratulations to the winning team of Susan and Duncan Cheetham, Jackie Blackmore and Gloria Campbell who won on countback after three teams were tied on 31. Special thanks to Julie, Wayne, Denny, Leanne, Greg, Murray, Jill, Alva, Jackie, Gloria, Barbara and Jacquie for joining in the fun.

A reminder to the new golfers who would still like some guidance around the course, please book into the Sunday afternoon tee slots around 1:30pm.

A few time saving tips for June:

- Be ready to tee off before time
- Be ready to play each shot
- Wherever possible, without distracting other players, walk to your ball while they are preparing to hit
- Study line, decide club etc while others are playing or preparing to play
- Leave trundlers/carts between the green and the next tee while on the green
- Keep your eyes on other's shots to save time searching for balls
- Don't dawdle between shots
- Do not hesitate to call the following group through if unable to keep your place in the field e.g. lost ball
- Always remember: Your place in the field is behind the group in front, not in front of the group behind.

Happy golfing!

# COURSE REPORT

June is here and so is the start of winter. We have already had a couple of frosts to start the season. Please remember why we hold play up when we have morning frosts. Details are noted Right. Frost delay information will be on the website as well as a sign at the start of the car park.

Welcome aboard to the new GM – Chris Wilson, we all hope to make him feel welcome.

We have recently Solid Tined the greens to help with aeration & infiltration into the profile. Tees & surrounds were also sliced to help with the same. We are due to do the fairways in June, as well as fertilise them. We will control the worms when the weather allows us to.

Jobs we aim to work on in the coming month/s are: Re-do the 3rd Surround, 11th Tee, as well as paths. Usual tree maintenance, weed eating and upkeep also.

## NOTE

Things that we notice that are becoming frustrating;

- Greenkeepers have the right of way – we do & will see you and allow you to play through promptly when we can. i.e. finish the green before you hit up.
- Cart Signs/rules – please be aware & use them. Carts to be 10m away from Greens.
- 9th surround is not a path to the 10th Tee when teeing off.
- 18th Green/Surround is not a practice area when you are starting your round.
- Bunkers/pitchmarks/divots, just normal golf etiquette. Fix as you play
- Car Park, please slow down, especially when we are working around the shed, some days the club is packed.

Please do not think we are angry, by doing these it helps the course quality as well the safety of staff/members/visitors. After all, we are here to enjoy what is a great facility we have at the Manawatu Golf Club.

I wish all members and visitors well in their up incoming Matches or personal goals. Please stay warm and healthy over the colder months.

Kiel Stechman



Frost causes the dew on the outside of the leaf and the moisture within the leaf to freeze.

In colder parts of NZ the crown and soil surface will also freeze.

If this is left to melt naturally the damage to the turf is negligible.

However when you walk on frosted grass, namely:

- A surface frost (as shown) will 1 – 2 days later turn black and many of the leaves walked on will die. The result is a slight thinning of the turf. Now consider the number of golfers walking over the grass and worst yet several days of frost and the turf can thin considerably. To make this worst, limited (if any) recovery will occur during winter and the thin turf cover can last until spring.
- Frozen crowns/soil surface causes more severe thinning of the turf cover as you will crush and kill the grass plant (crown) and can cause the roots to be sheared from the plant.



Safety – we have a responsibility to provide a safe environment in which you can enjoy your golf.

Walking/driving on frozen turf (particularly given most clubs now adopt spikeless footwear) increases the risk of crashes, slips and injury.

## RULES CORNER

This month I will attempt to clarify for members the correct procedures for taking relief from marked (and unmarked) areas of GUR particularly as this applies to the areas between the 14th and 15th holes affected by the major tree removal project. It is timely to remind members just what constitutes GUR under the Rules of Golf. Ground under repair (GUR) is included with other abnormal course conditions (animal holes, immovable obstructions and temporary water) under Rule 16 and is clearly defined as Any part of the course the Committee defines to be ground under repair (whether by marking it or otherwise). GUR also includes the following things even if the Committee does not define them as such:

- Any hole made by the Committee or maintenance staff in setting up the course or maintaining the course (but not including aeration holes). Examples include a hole where a stake has been removed, a hole made in removal of turf or a tree stump.
- Grass cuttings leaves or any other material piled for future removal.

The **Manawatu Golf Club** Local Rule covering GUR clearly declares **all GUR as non playing areas**, which over rides the provision in Rule 16.1b for a player if he/she so wishes, to play the ball as it lies in GUR. **Under our Local Rule players must take relief from all GUR.** In this club, GUR is marked by blue stakes and or blue lines. For the recent Manawatu Open, several areas were marked with blue lines only while other areas were marked by stakes and incomplete blue lines. Currently the major areas of GUR between the 14th and 15th holes are marked by stakes only (the faded blue lines have no practical significance).

The Committee have identified an area between the 14th and 15th holes that suffered no significant damage during the tree removal project and rightly have deemed this area as “fit for general play”. This area clearly now separates the two clearly defined areas of GUR. Members must become familiar with these areas to ensure fairness and consistency in how and when relief is permitted.

### Relief Procedure when there is interference by GUR.

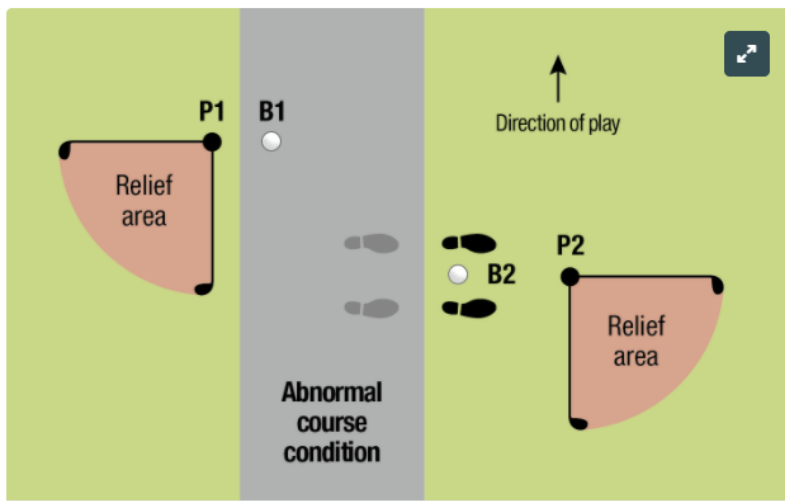
Under Rule 16.1b (and our Local Rule), the player must take free relief by dropping a ball in the relief area as defined by

- Reference point: The nearest (NOT THE NICEST!!) point of relief (no nearer the hole than where the ball came to rest in GUR)
- Size of relief area: 1 club length from reference point
- Limits on location of relief area: Must be in the general area, must be not nearer the hole than the reference point, there must be complete relief from the GUR



## RULES CORNER

Figure 16.1a demonstrates how this procedure works. The area of abnormal course condition in this diagram we will assume to be GUR and points P1 and P2 show the nearest points of relief for a right handed player for balls at rest at points B1 (ball at rest in GUR) and B2 (position of ball at rest would cause interference to player's stance). Note the player must take full relief.



With regard to the areas between our 14th and 15th holes there are some smaller areas of course damage and repair (smoothing and re sown) that lie outside the marked areas of GUR. These areas should be treated as unmarked GUR and penalty free relief taken as per Rule 16.1b. In some cases, there may be uncertainty as to how to treat some areas – in these instances, players should consult with fellow competitors and agree on a fair and reasonable way to proceed.

# Welcome

The Committee would like to confirm the acceptance to the Club of the following new and returning members who applied in April 2021

**7 Day** – Stephen Berg, Adam Coll, Richard Maclean, Paul Stringer

**5 Day** – Hangfeng Ji

**Under 30** – Jordan Bain, Blair Hodgson

**Under 25** – Connor Deeley, Joshua Liddington, Jamie Sommer

**Country** – Cam Dearlove, Brett Doolan

**Tertiary** – Katherine Dupuis, Zachary Dupuis, Callum Gillies, William Morris

**9 Hole** – Simon Anderson, Milee Jeong, Nancy Taneja

**Restricted Junior** – Gabrielle Aldridge, Anushka Gautam, Luke Henderson, Helen Ji, Jiho Lee

**Social** – Al-lek White

During this same period, 23 members resigned bringing our total membership number to 1068 members. We wish our resigned members all the best and welcome our new members, we are sure you will enjoy your time at the Club.



# What's on in June...

Please note some changes

Please note this programme is subject to change. Please remember to always check and book via the tee sheets on the Club website or at the card room kiosk for available tee times.

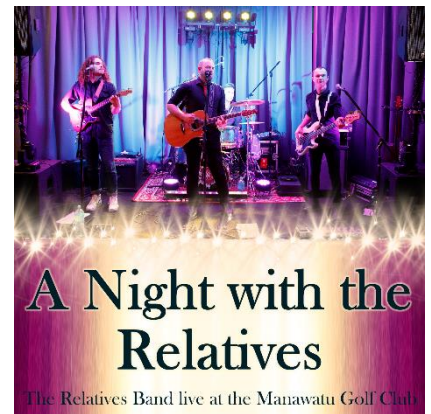
June

■ MEN  
■ WOMEN  
■ MIXED  
■ EVENT

MONDAY		<b>7</b> Queen's Birthday	<b>14</b>	<b>21</b>	<b>28</b>
TUESDAY	<b>1</b> 18 Hole: Stableford 9 Hole: Committee Choice	<b>8</b> 18 Hole: Par 9 Hole: Stableford	<b>15</b> 18 Hole: Par, White Tees 9 Hole: Stroke	<b>22</b> 18 Hole: LGU 2nd Qualifying Rd Club Champs 9 Hole: Par	<b>29</b> 18 Hole: Stableford 9 Hole: Stableford
WEDNESDAY	<b>2</b> Wade Cup Stableford 9 Hole: Committee Choice Alternate Tees	<b>9</b> Wade Cup Stableford 9 Hole: Stableford	<b>16</b> Wade Cup Stableford 9 Hole: Stroke, LGU	<b>23</b> Wade Cup Stableford 9 Hole: Par, 2nd round Lavender/Gillespie Cups to be completed	<b>30</b> Wade Cup Stableford 9 Hole: Stableford
THURSDAY	<b>3</b>	<b>10</b> Thursday Club	<b>17</b> Yorb Business House	<b>24</b> Thursday Club	
FRIDAY	<b>4</b>	<b>11</b>	<b>18</b>	<b>25</b>	
SATURDAY	<b>5</b> Craigs Investment Tankard Draw, Rd 2 MacLennan to be completed 9 Hole: Committee Choice Alternate Tees 18 Hole: Par	<b>12</b> Par Feilding Inter Club Men at Manawatu 9 Hole: Stableford Feilding Interclub Women at Feilding; 9 Hole: Stableford	<b>19</b> Stroke 9 Hole: Stroke, LGU 18 Hole: LGU, 2nd Qualifying Round Club Champs	<b>26</b> Par 9 Hole: Par 18 Hole: Stableford	
SUNDAY	<b>6</b>	<b>13</b> MacLennan, Round 1 Consolation to be completed Imlay Saunders Round 1 to be completed	<b>20</b> MacLennan, Round 3 to be completed	<b>27</b>	



  
 Queens  
 Birthday  
 Long  
 Weekend



SPONSOR OF THE MONTH



PLEASE CONTINUE TO SUPPORT OUR SPONSORS AS THEY ARE SUPPORTING YOUR CLUB - Major Sponsors Below



Brian Green Property Group  
Property Investment, Management & Development



PAUL O'BRIEN



MANAWATU KNITTING MILLS LTD



Manawatu Toyota



06 355 5279  
www.fowlerhomes.co.nz



We Reuse I.T.  
Reuse - Recycle - Refurbish - Repair



Courtesy Ford

