



October 2019

## MESSAGE FROM THE GENERAL MANAGER AND PRESIDENT

September has been another busy month, as they all seem to be nowadays.

The SGM to discuss the sale of the land was held on 2 September and when the motion to accept the council offer was put to those present to vote, 45 voted in favour, with 6 voting against. The motion was passed. There is obviously a fair amount of discussion in what the Committee is going to do with the proceeds from the sale of the land. \$130,000 will be put aside for Debenture Holder repayments, with the balance to Course Maintenance and irrigation provisions. We are not expecting the funds in the club coffers until late December.

The new carpet has now been installed and we are really happy with how it all looks. Midway Flooring Xtra did a wonderful job and were an absolute pleasure to deal with. A big thank you to Tom and his team at Flooring Xtra. We also welcome Flooring Xtra to our extending sponsorship list.

Registrations for the 125-year Jubilee next year are starting to come in. It will pay to register early, as numbers are limited. Details are on the club site. This will be a fantastic weekend. We thank FMG and Gilmours for their amazing contribution. Supporting sponsorships are also available, please contact the Office or look on the club's website to view the package.

The annual Manawatu Open will be held on the Sunday of Labour Weekend. Wallace Development are no longer sponsoring this, but we thank Jonathan and his team for their sponsorship in recent times. This event will now be known as the "Powerturf Manawatu Open". Thanks to the team at Powerturf for coming on board at short notice.

We are now getting down to the business end of the season, with Club Champs well underway. All the best to those still competing. Please check November dates, as it is always very busy, with Finals Day, the Unreal Grass B Grade Championship, TailoredNZ Par 3 Challenge, Christmas Cheers, and Closing Day.

I am thrilled to announce that our GM, Warren Collett recently passed his Certified Club Manager (CCM) exam. Warren is one of only 7 Golf Club Managers in New Zealand to be awarded this worldwide golf club managers certification. There were 10 competencies involved, all relevant to Warren's everyday work.

This has been a five-year journey, which culminated in an 8-hour exam!!! Outstanding.

Warren will be off to Dallas, Texas early February where this will be awarded at the World Managers Conference.

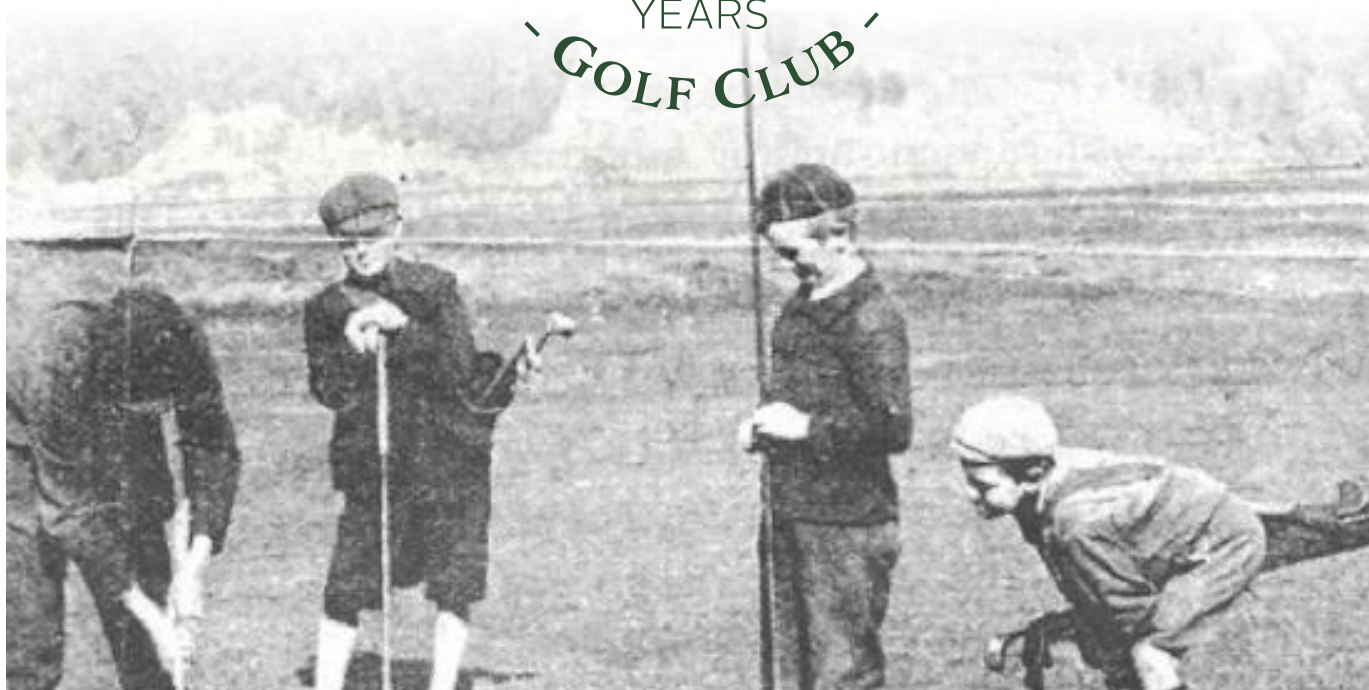
## MESSAGE FROM THE GENERAL MANAGER AND PRESIDENT CONTINUED...

The Pro Shop has been busy and recently they held the Ping/Mizuno fitting day. This was extremely successful. Ping and Mizuno is now one of our biggest brands. On 18 October, Titleist are holding their fitting day. Members need to book early for these days, as they are very popular.

The course is looking fantastic, with the Greens staff relishing the recent spell of fine weather. This is always a great time of the year for the course, so get out and enjoy as it comes out of winter and into the warmer grass growing period. The grass on the 12th hole realignment has taken off and we are on track to officially open the hole on Closing Day. The suggestion has been made to name the hole "Jubilee" which is a great idea.

Good golfing everybody

Warren Collett and Brent Cawthray



# 125 YEAR JUBILEE

17<sup>th</sup> – 19<sup>th</sup> April 2020

**POWER TURF**

*Success from the ground up*

# Manawatu Open

36 Hole  
Strokeplay

Sunday 27th October

Kerry Mountcastle  
2018 Champion

NZ Golf and Manawatu Wanganui Golf Order of Merit  
Entry Fee \$50 (Includes lunch) | Mens and Womens Divisions | Gross & Net Prizes

Sponsored by Power Turf

Please enter online at  
[www.manawatugolfclub.com](http://www.manawatugolfclub.com)  
(Payment required on entry)  
Entries close on Monday 21st October

Restricted to the lowest 96 entries by handicap at the  
date of entry closing. Draw will be posted on  
[www.manawatugolfclub.com](http://www.manawatugolfclub.com) by Friday 25th October



EST. 1895  
**MANAWATU**  
GOLF CLUB





unreal  
**GRASS**

Just Like Real Grass - Only Better!

# 2019 MANAWATU B GRADE MEN'S OPEN CHAMPIONSHIP

## SUNDAY 17th NOVEMBER

**27 HOLE STABLEFORD**  
**ENTRY FEE \$45 (INCLUDES LUNCH)**  
**OPEN TO ALL AFFILIATED 18 HOLE GOLFERS**  
**HANDICAP INDEX 8.8 - 22.5**  
**LIMITED TO 64 ENTRIES**  
**OVER \$3000 IN PRIZES**

**1st prize:** Round of golf for 4 (incl. 2 carts) at Cape Kidnappers plus 1 doz Titleist ProV1 golf balls.

**2nd & 3rd:** Round of golf for 2 (incl. cart) at Royal Wellington GC plus 1 doz Titleist ProV1 golf balls.

**4th onwards:** Manawatu Golf Club vouchers & Titleist ProV1 golf balls.

+ A new afternoon 18 hole prize included

30% of all paid entries guaranteed a prize!

*Titleist*

THE FARM  
**CAPE KIDNAPPERS**

  
**ROYAL WELLINGTON GOLF CLUB**  
HERETAUNGA - 1895

**SUPPORTING**



doing our bit  
for **cure kids**

Please enter online at:

[www.manawatugolfclub.com/tournaments](http://www.manawatugolfclub.com/tournaments)

Payment required on entry

Entries close 5:00pm Tuesday 12th November

More information contact the office: 06 3578793



EST. 1895  
**MANAWATU**  
GOLF CLUB



EST. 1895

**MANAWATU**  
GOLF SHOP

MANAWATU GOLF CLUB

MANAWATU GOLF CLUB

## Pro Shop

Hi Everyone, I hope you all managed to get some golf in over the weekend while our course was inundated with lawyers from all around the country. As they do every year, they all raved about our course and how lucky we are!

As for us in the shop, it is a very busy weekend! Below is snapshot of prizes and merchandise we organised for the week. There is a lot of planning that goes into this weekend - so again a really well done job to Andre who controls a lot of the organising from our side of things and also a big thank you to the rest of my team in the shop (Lisa, Tim & Guy) who worked really hard over the week and weekend to help make it a successful Devil's Own for the competitors and also the Golf Club!

*Titleist*  
**The New Range of T Series and U Series Fitting Day**  
 Friday 18 October 2019  
 bookings essential  
 please contact Golf Shop now to secure your spot



At the start of September, with the support of the Manawatu Golf Club, I was lucky enough to attend the Australian PGA Expo on the Gold Coast. It was a fantastic three days learning some new things from some of our world leaders in their chosen field in the golf industry. This included the likes of Bob Vokey (Titleist Vokey Wedges), Colin Swatton (Jason Days coach/caddy) and many more!

**Just remember if you have any questions regarding your game please don't hesitate to ask us, we are here to help!**

Your Proshop team - Alan, Andre, Lisa, Tim and Guy





## A message from the Club Captain

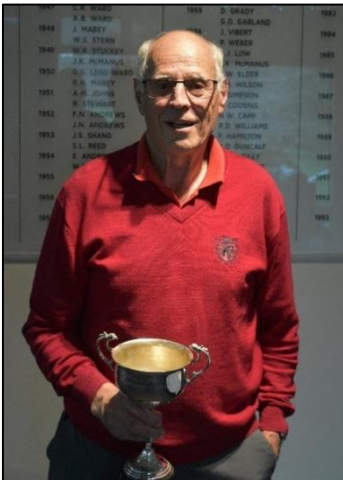
Congratulations to the green keepers team of James Hart and Cam Devaney who beat Lee Waller & Reid Stiven in the MacLennan 4-ball final. It must have been a great match as the title was decided on the 20th hole!



Winners of the MacLennan Consolation Cup, John Beaumont & Paul "Woody" Woodhead who beat David Petre and Edwin Van Der Merwe 1 up.



Congratulations to Paul Johnson winner of the September Craigs Investment Partners Tankard. Paul scored an impressive 49 stableford points and not surprisingly Paul also won his Club Champs match 8 and 7! A witness to this fine round tells me that a recent lesson with Andre has straightened up Paul's driver considerably.



Winner of the Devil's Own Stableford Trophy was John Symon with 45 Stableford points. John, playing in the afternoon, won by 4 points from a host of morning players on 41 points, Bruce Holmes, Murray Brown & David Townend and on 40 points, Stuart Robbie & Derek Walker.

Congratulations to Nakul Lakhani for his hole in one! Nakul got his hole in one on the 11<sup>th</sup> Hole on 18<sup>th</sup> August!



## A message from the Club Captain Continued

### Bus Trip to Paraparaumu Beach Golf Club

The Bus Trip on Devil's Own weekend went to Paraparaumu Beach Golf Club this year. A full contingent of 40 made the trip to a fine and dry but hard and fast course. Compared with last year the scoring was pretty good with a couple of 40 pointers. Well done to Gus Fowler (40 pts) and Sam Smith (36 pts) who won the mystery partners. Second was Allan Bailey (38 pts) & Andrew McCready (33 pts) with James Amon (36 pts) & Jason Westwood (34 pts) third. The Club Captain had a shocker and paid out to most!



### Club Championship Survey

Thanks to all who voted in the Men's club championship qualifying round survey. We received 107 votes. Results were for the status quo to remain with 47% of the votes, 3 back to back rounds with best one counting had 29% of votes and 3 rounds over 3 months on the tankard days with best round counting received 24% of the votes.

Men's shoot out on 20th October: There are only 2 weekend rounds (5th & 12th Oct) left to qualify.

**Are you Interested in playing Interclub pennants from Manawatu Golf Club? Then read this!**

Pennants (off-the-stick) and Handicap pennants in the Manawatu-Wanganui district will be much different in 2020. There will be 3 off-the-stick divisions in which we have a team in A & B divisions. Each division has 6 golf clubs/teams. At the end of the season we may form a 3rd team to challenge the bottom team in the C division for a place in the 2021 competition.

For Handicap pennants in 2020, the competition has been changed in that there is now only one round of 18 holes played on each competition day. At the time of writing there were 7 clubs putting a team into this competition. The Manawatu Golf Club has decided to enter TWO teams for this competition in 2020 to make it an 8-team competition.

Those interested in playing pennants (Off-the-stick or Handicap) in 2020 should in the first instance contact Richard Shaw but an expression of interest sheet may go up in the Card room in December.

Taihape Golf Club who have a long history of playing in A and B grade pennants maybe struggling to field a team for 2020. The rules of the pennant competition allow one outsider to play for a team. If you are <8-9 handicap golfer and are interested in playing for Taihape, please talk to me. There would be minimal cost in playing for Taihape as you should be able to travel with our B pennant team in 2020. This opportunity may only eventuate if they cannot find 6 regular players.

## A message from the Club Captain Continued

### MWGA 36 hole event – Challenge Cup results

Some good performances were achieved by members playing at the MWGA Challenge Cup 36 hole Strokeplay at Feilding. Well done to Lily Griffin who came 3rd on gross (2nd Net) in the Women's event. Tara Raj won this event with a gross score of 152. Lily was also named as captain for Women's Junior Inter-Provincial team at Rotorua.

Pos	Men	Club	R1	R2	Gross
1	Liam Finlayson	Feilding	71	70	141
2	<b>Josh Sedgwick</b>	<b>Manawatu</b>	70	75	145
3	Bradley McSherry	Palmerston North	74	75	149
3=	<b>Regan McConaghty</b>	<b>Manawatu</b>	75	74	149
9=	<b>Ethan Dodds</b>	<b>Manawatu</b>	74	79	153
15	<b>Kaleb Idemaru</b>	<b>Manawatu</b>	76	79	155
34	<b>Richard Shaw</b>	<b>Manawatu</b>	83	86	169

In the Men's event Josh Sedgwick came second (145 gross) and Regan McConaghty came 4th (149 gross). The winner for the second year in a row was Liam Finlayson (141 gross)

The last order of merit event is the Power Turf Manawatu Open on Sunday 27th October (36 holes off the Black tees for the men). Register for the event at [www.manawatugolfclub.com/tournaments](http://www.manawatugolfclub.com/tournaments)

Pos	Women	Club	R1	R2	Gross
1	Tara Raj	Wanganui	76	76	152
2	Zhuoyi Hu	Palmerston North	78	75	153
3	<b>Lily Griffin</b>	<b>Manawatu</b>	76	82	158
4	<b>Lisa Herbert</b>	<b>Manawatu</b>	82	83	165
5	<b>Mudra Lakhani</b>	<b>Manawatu</b>	84	86	170

# WELCOME

## NEW MEMBERS –

The Committee would like to confirm the acceptance to the Club of the following new members who applied in July 2019

7 Day Member – John Myszczyzyn, Johan Tait, Kevin Thomson

Under 30 - Kasun Abeywickrema

Full Playing Junior– Tom Taylor

Restricted junior – Grace Ding

Social - Garry Lamb

During this same period, 7 members resigned bringing our total membership number to 974 members. We wish our resigned members all the best and welcome our new members, we are sure you will enjoy your time at the Club.



# WOMEN'S GOLF

## Club Captain's Report

A few hardy ladies have battled the elements over the past few weeks. Unfortunately, we had to cancel our Spring into Spring day which was a disappointment, particularly as a number of 9 holers were going to play 18 holes with the Tuesday ladies. We don't have a spare day to have this event so we will just have to try again next year.

On a positive note, the Manawatu Wanganui Rep team had a great win for the Judy Pearson Salver against Hawkes Bay at the Maraenui Course. They won 13 ½ to 2 ½.

This coming week, Manawatu Wanganui are sending a Junior Girls team to the Interprovincial in Rotorua for the first time for a couple of years. The team of six have the first three players playing match play off the stick while the second three play off handicap. Lily Griffin is an important part of this team and Lisa Herbert will be the Manager. We wish them well.

We have had the last LGU round so the Mellsop cup will be played on the 19<sup>th</sup> and 22<sup>nd</sup> of October. The list of players who have qualified will be put up in the locker room.

There is only one round to go in the Thursday Club. This will be played on Thursday October 3<sup>rd</sup> in conjunction with the Dorothy Taylor Grandmother's Trophy. If you haven't qualified you have one last chance to have a great score and make the cut.

So, in summary, October golf is as follows:

Tuesday 1<sup>st</sup> - Captain vs Convenor & twos. This will be played on stableford and Jill and Deb will explain on Tuesday.

Thursday 3<sup>rd</sup> - Thursday Club & the Dorothy Taylor Grandmother's Salver (on stableford)

Tuesday 8<sup>th</sup> - Stableford

Thursday 10<sup>th</sup> - Open Day - register on the website [www.manawatugolfclub.com](http://www.manawatugolfclub.com)

Tuesday 15<sup>th</sup> - Bisque Par off the white tees (this is where you can use your shots on any holes you like)

Tuesday 22<sup>nd</sup> - Mellsop Cup (all LGU winners over the year) & Doris Dixon (all non LGU winners). Played on Nett.

Tuesday 29<sup>th</sup> - Swinging Skirts (wear a skirt if you have one), playing Left & Right

Thursday 31<sup>st</sup> - Thursday Club Shoot Out.

Of course, the big focus for the month is the Manawatu Women's Open Day tournament on Thursday October 10<sup>th</sup>. Planning for this event is progressing well and it is pleasing that our sponsors have been very generous as usual. Entries are trickling in. If you haven't entered, please do so soon and if you know anyone who would like to play in this great event please spread the word.

We are looking forward to more settled weather and a wonderful month of golf.

Happy Golfing

Jill Clifton, Women's Captain

# WOMEN'S GOLF

## Saturday Women's Report

Spring has sprung and with it has come renewed enthusiasm for golf.

Fairways are drying out and allowing for the long awaited run which has resulted in some impressive scoring.

Everybody is enjoying the warmer weather and club championship games are now underway.

Social occasions have continued with a movie night to Downton Abbey and a roadie to Rangitikei golf course followed by lunch at Viv's in Sanson, where the famous cream horns were sampled.

Good Luck to our two women finalist's in the Imlay Saunders competition.

Sue Spiers - Saturday Women's Committee



Congratulation to Lily Griffin who had her first Hole-In-One while playing in the NZ Women's Under 19 at Millbrook, Queenstown. She holed out on the 11<sup>th</sup> hole on the 5<sup>th</sup> September

.....  
**JOIN US FOR DINNER  
AT THE GOLF CLUB  
& ENJOY FIREWORKS  
OVER THE RIVER  
FROM THE PERFECT  
VIEWING SPOT!**  
.....

### BOOK IN NOW!

Delicious Buffet Dinner  
including dessert  
served 7:00pm—7:45pm

\$35 Adults. Kids pay their  
age or kids menu available

Limited A la carte menu  
available before 6:45pm

Fireworks  
display 9:00pm

**GUY  
FAWKES  
DINNER  
5TH NOVEMBER 2019**





EST. 1895  
**MANAWATU**  
GOLF CLUB

# House of Travel Broadway Women's Open Day

Thursday 10th October 2019 - 10am Siren Start

Registration 8:45am - 9:30am

Three divisions—0 to 40.4 index

**GROSS—NETT—STABLEFORD**

Entry Fee—\$25.00 includes twos, longest drives and accuracy

Major prizes totaling over \$2000\*

House of Travel Broadway - Voucher for Best Stableford Overall

Courtesy of Kate Harris

Best Gross, Bronze Division: Alison Schultz Cup

Entries close MONDAY 7th October

Slope rating 117. Handicap index and Club ID essential

Entries to: Manawatu Golf Club, 19 Centennial Drive, Palmerston North

Enter online at [manawatugolfclub.com/tournaments](http://manawatugolfclub.com/tournaments)

[events@manawatugolfclub.com](mailto:events@manawatugolfclub.com) Cash payment to be made on the day

\* Players must be in the Clubhouse to be eligible for major prizes





## NINE HOLE NEWS

Great to see a bit of run on the greens for a few days. Hopefully lots more to come.

Our Club Champs are well under way, also our Stableford Matchplay competition. Good luck to those still in.

We had our 2nd Tri-series in Feilding on a most dreadful freezing cold winters day. It was not the best for us as Feilding players must be used to that weather. Feilding played well which leaves us with a slight nose in front, with 3rd and Final Round at Palmerston North in November.

We had a fun day on Black Friday with men wearing black ties and teeing off black tees and ladies off orange tees, wearing something orange. Fun day had by all.

On Devils Own Friday a few of us played at Rangitikei course followed by lunch at Vivs Kitchen to wish Ray Abbott a Happy Birthday

Good golfing

Colleen Fraser & Wayne Revell

Nine Hole Convenors



Friday 13<sup>th</sup> – Black and Orange



Saturday 9 Hole Ladies in Eketahuna



There are a variety of events from the 17<sup>th</sup> – 19<sup>th</sup> April to celebrate the 125<sup>th</sup> Jubilee. Friday has 9 and 18 Holes Golf and a fun food station evening function. Saturday has 9 and 18 hole options and a sit down formal dinner. There is a morning tea celebration and official cake cutting on Saturday morning. A book has also been commissioned for the 125<sup>th</sup> Jubilee.

All details are on the website and registration is now open. Early bird special (15% discount) is available until 31<sup>st</sup> October. Head to the website or into the office to register now!

## COURSE REPORT

As we near the end of the year, the festive season is upon us. Daylight savings is here, warmer weather on the horizon, what else could we ask for ☺. September has been a warmer month than the wet months previous, this has allowed a few of the wet areas to dry up nicely. We plan to renovate those areas in the coming months. As you all know the famous Devils Own was on at the end of the month, I hope you all took time out to go and play some other local courses. It is a pleasure to have them here each year and we, the greenkeepers, enjoy them being here to enjoy our course and what it offers.

WELL DONE TO OUR TEAM MEMBERS James Hart and Campbell Devaney for taking out the MacLennan competition. Hopefully they can back it up next year too.

Greens will be solid tined after the Manawatu open, then fertilised, verticut and top dressed as per maintenance program.

Tees and Surrounds have good cover, will look to over seed a few areas in the coming months. Fairways are looking great and are due for a weed spray when the weather allows. Will renovate areas that were affected in the winter months to help moving forward. Rough is also yet to be sprayed for weeds, we have started in a few areas.

The course in general is in good conditions for golf, there are small areas that we will work on in the coming months to tidy up and improve.

Please continue to watch where you drive your cart. Please continue to replace your divots and fix your pitch marks. Have a great golfing month.

Couple of Quotes to finish;

- I'll always remember the day I broke ninety. I had a few beers in the clubhouse and was so excited I forgot to play the back nine.
- They say golf is like life, but don't believe them. It's more complicated than that.
- I'd like to see the fairways narrower. Then everybody would have to play from the rough, not just me.

Enjoy your golfing month

Kiel Stechman - Course Superintendent



**Another great year with  
the Devils Own.**

**A cannon shotgun start  
for play on Friday**



## Rules Corner

As we have now completed almost a full year playing golf under the new rules that were introduced in January, it is timely to see how well we understand and have incorporated them into our regular play. Here is a Rules Quiz comprising 6 True/False questions and 4 Multiple Choice questions taken from sample test exams provided by the R&A for those considering attaining Level 1 or Level 2 Golf Rules qualification. Members are encouraged to consult the Rule Book as they attempt to answer these questions and understand the answers.

### True/False Questions

1. The General Area of the course includes all wrong greens
2. Sand and loose soil are loose impediments
3. A player may substitute a ball when taking relief from an immovable obstruction
4. A partner in a four ball match may point out the line of play for his/her partner on the green by touching a point on the green
5. In a four ball match, if a player's ball hits his/her partners trundler, the player gets a 1 stroke penalty
6. When searching for a ball in the rough, there is no penalty if the ball is accidentally moved by the player

### Multiple Choice Questions

1. A player's ball lies on a bank in a penalty area. As the ball is not in any water, she decides to play the ball as it lies. Prior to making the stroke, she grounds her club in making a practice swing and removes some leaves that are lying close to the ball. What is the ruling?
  - a) The player gets one stroke penalty
  - b) The player gets two stroke penalty
  - c) There is no penalty
2. On the putting green, a player marks the position of and lifts his ball. When it is his turn to play, he replaces his ball, removes the ball marker and before he addresses the ball, a gust of wind moves his ball closer to the hole. What is the ruling?
  - a) The ball may be played from its new position without penalty
  - b) The ball must be replaced with a one stroke penalty
  - c) The ball must be replaced without penalty



## Rules Corner

3. In stroke play, a player playing from the teeing ground misses the ball completely. Before his next stroke, he re-tees the ball 1 metre away from its original spot (still in the teeing area), then plays the ball. What is the player's score after the second stroke from the teeing area?
  - a) The player gets the general penalty (2 strokes) and now lies 4
  - b) The player gets a 1 stroke penalty and now lies 3
  - c) The player is not penalised and now lies 2
4. A player hits his ball into a bunker. The player is prohibited from:
  - a) Removing loose impediments (eg leaves, branches, pine cone)
  - b) Touching the sand in making a backswing for a stroke
  - c) Removing the rake



## Rules Quiz Answers

### True/False Questions

1. True - see Defined areas of the course in Rule 2
2. False - see Definitions of Loose impediments – exception when on the putting green!
3. True - see Rule 14.3a
4. True - see Rule 10.2b for actions permitted on putting green by caddies and partners in four ball competitions
5. False - see Rule 11.1a
6. True - see Rule 7.4

### Multiple Choice Questions

1. C – Rule 17.1b clearly states that a player may play a ball in a penalty area under the same rules that apply to a ball in the General Area
2. C – under the new rules, if a ball on the putting green is moved by natural causes (wind) after it has been marked and replaced, the player must replace the ball and play from the original marked spot without penalty
3. C – see Rule 6.2b for rules covering play from the teeing area
4. B – see Rule 12.2a for actions that are now permitted prior to making a stroke from a bunker – and Rule 12.2b for restrictions on touching sand in a bunker

# Hokowhitu Café & Bar



Another wonderful night at the Wine Match dinner. The Kitchen again blew everyone away with fantastic food which was matched with Obsidian Wines. Thanks to both Obsidian and Duncan from the Village wine trader for assisting with a great night!



**VILLAGE WINE TRADER**  
YOUR LOCAL WINE EXPERTS



**Rugby World Cup Heineken Promotion at the Bar!**

**Buy five Heinekens and receive the sixth free!  
Served up on ice in our Heineken buckets**

# What's on in October...

Please note this programme is subject to change. Please remember to always check and book via the tee sheets on the Club website or at the card room kiosk for available tee times.

EVENT

MIXED

WOMEN

MEN

October

MONDAY		7	14	21	28
TUESDAY	1 18 Hole: Captain vs Convenor 9 Hole: Stableford	8 18 Hole: Stableford 9 Hole: Stableford	15 18 Hole: Bisque Par, White Tees 9 Hole: LGU	22 18 Hole: Mellsop Cup & Doris Dixon 9 Hole: Stableford	29 18 Hole: Committee Choice 9 Hole: Stableford
WEDNESDAY	2 Wade Cup Stableford 9 Hole: Stableford	9 Wade Cup Stableford 9 Hole: Par	16 Wade Cup Stableford 9 Hole: Stroke, LGU	23 Wade Cup Stableford 9 Hole: Stableford Alternate Tees	30 Wade Cup Stableford Final Round 9 Hole: Stableford
THURSDAY	3 Thursday Club Dorothy Taylor Grandmother's Salver	10 Manawatu Women's Open Day Tournament	17 Nuviev Wealth Solutions Business House	24	31 Women's Shootout
FRIDAY	4	11 NZICA Tournament	18	25 Twilight Golf 3.00-5.30pm start First night	
SATURDAY	5 Craigs Investment Tankard Draw. 9 Hole: Stableford 2nd Round Club Champs to be completed. Adam Cup for Grandmothers Stableford	12 Par 2nd Round Club Champs & Round 1 flights to be completed. Final qualifying round for shootout. 9 Hole: Par. 18 Hole: Bisque Par, White Tees	19 Par 9 Hole: Stroke, LGU, Semi-final Club Championships to be completed 18 Hole: Mellsop Cup & Doris Dixon	26 Stroke. Semi final Club Champs & Rd 2 flights to be completed 9 Hole: Stableford Alternate Tees 18 Hole: Committee Choice	
SUNDAY	6 2nd Round Club Championships to be completed	13	20 Men's Shootout	27 Manawatu Open Championship - Course Closed	





SPONSOR OF THE MONTH

# MIDWAY FLOORING < > TRA

PLEASE CONTINUE TO SUPPORT OUR SPONSORS AS THEY ARE SUPPORTING YOUR CLUB - Major Sponsors Below



Advising your future.

